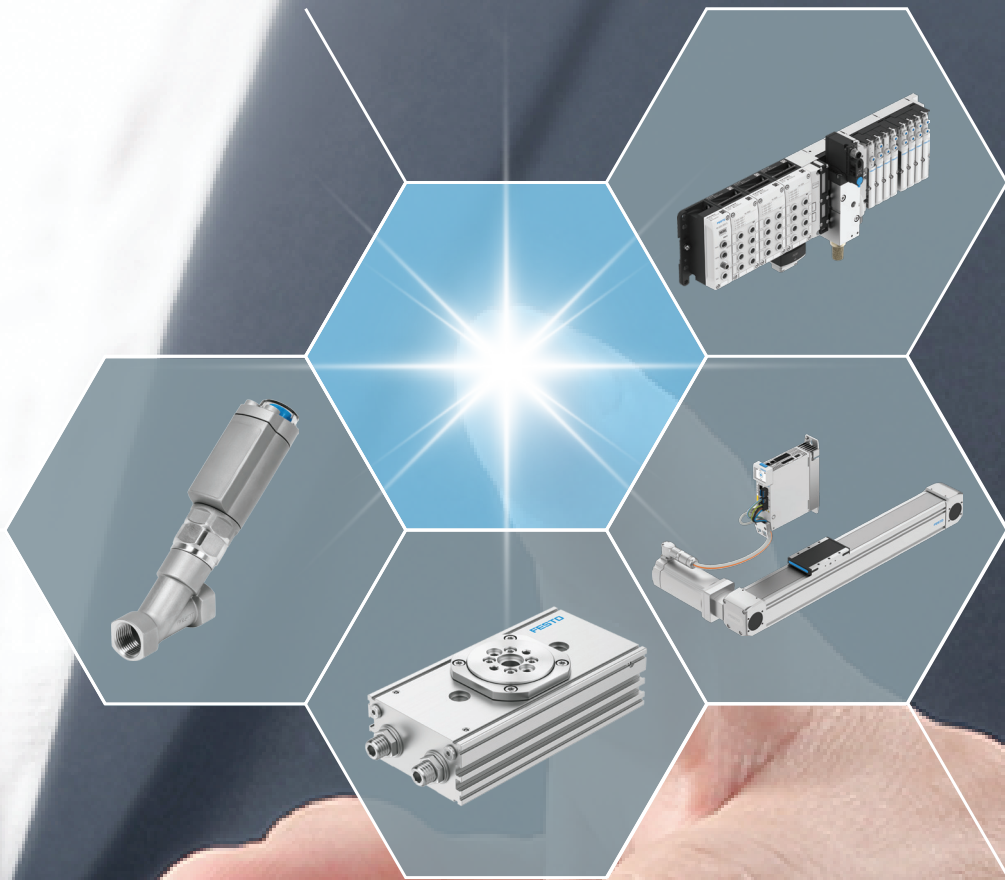


FESTO



**Key
Automation
Product**

The key to your daily automation needs

Our goal is to make you more productive. From actuators to accessories for factory automation as well as process automation - you can reduce procurement complexity for both the electric and pneumatic control chain.

At the same time, we work consistently on our production and delivery capacities worldwide to ensure that you receive the products you ordered promptly, even in large quantities.

Your world of automation starts here

Page 8	Page 14	Page 24	Page 38	Page 45	Page 54	Page 59
Controls	Electrics	Valves	Actuators	Process	Sensors	Air Preparation & accessories

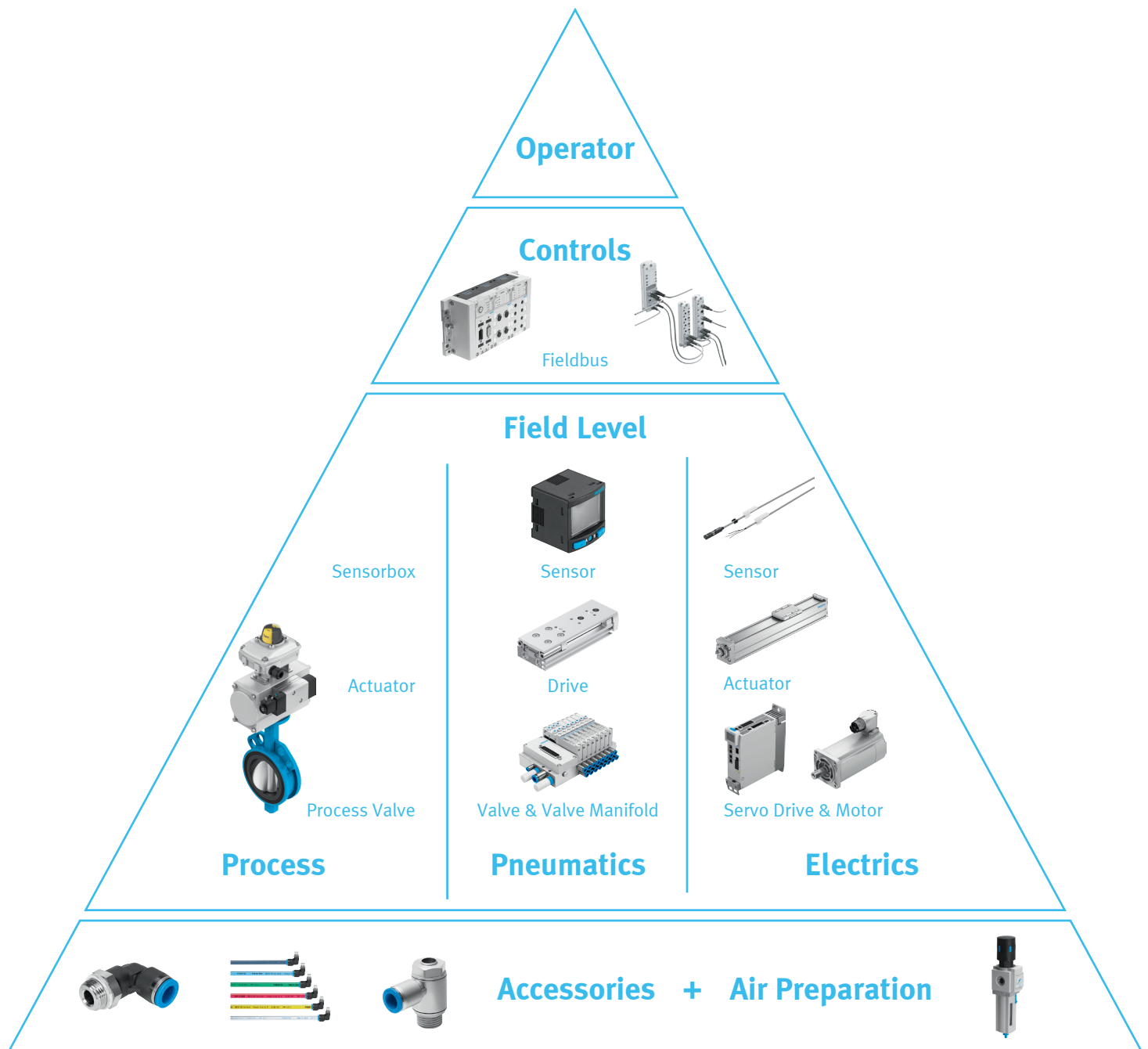
A simplified product selection.

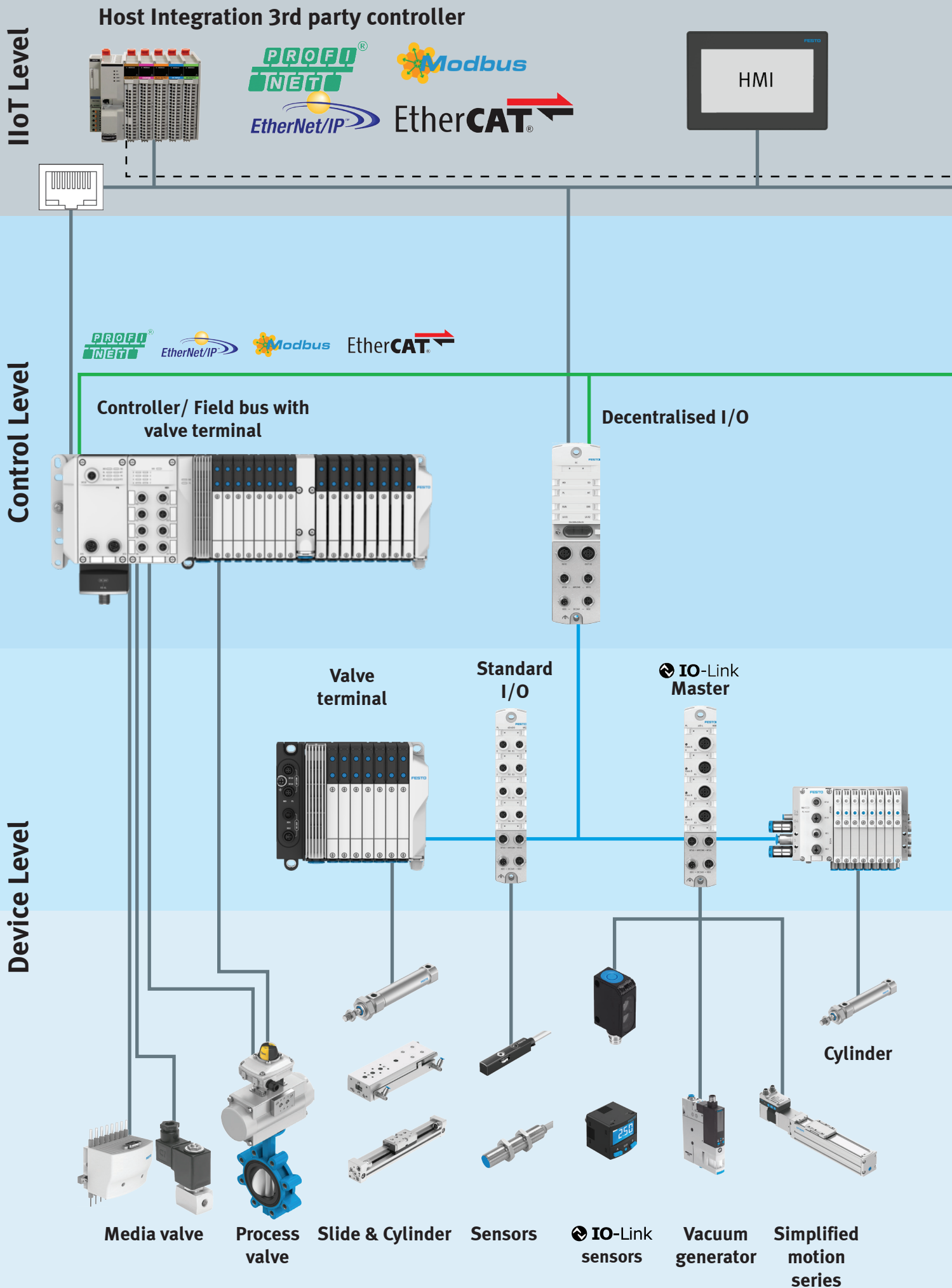
Check out our new Festo Online Shop!

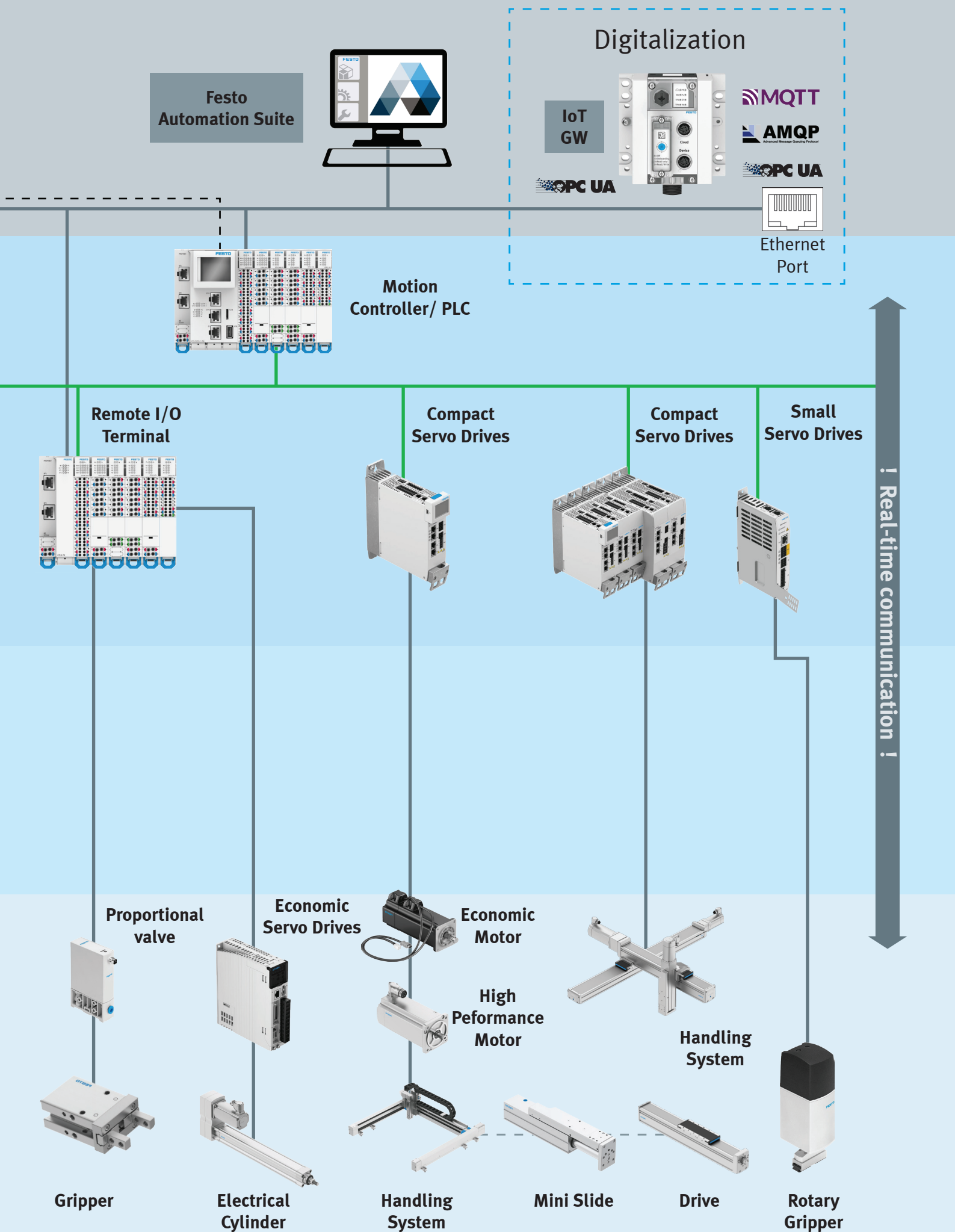


You are looking for cost-effective automation?
You need short delivery times?
We deliver large quantities fast and worldwide.

→ **WE ARE THE ENGINEERS
OF PRODUCTIVITY.**







CONTROLS	Controller CPX-E  Pg 10	Remote I/O CPX-E  Pg 10	Remote I/O CPX-AP-A  Pg 11	Distributed remote I/O CPX-AI-I  Pg 11	Operator unit CDPX  Pg 12	
	Servo drive CMMB-AS  Pg 16	Servo drive CMMT-AS  Pg 16	Servo drive CMMT-ST  Pg 16	Servo motor EMMB-AS  Pg 17	Servo motor EMMT-AS  Pg 17	Stepper motor EMMB-ST  Pg 17
ELECTRICS	Rodtype electric cylinder ESBF  Pg 20	Spindle actuator ELGD-BS  Pg 21	Toothed belt actuator ELGD-TB  Pg 21	Rodless electrical drive EGC-TB  Pg 21	Spindle actuators EGC-BS  Pg 22	Electrical spindle drive ELGT-BS  Pg 22
	Optimised compact valve VUVG-S  Pg 25	Compact valve VUVG  Pg 25	Optimised standard valve VUVS-S  Pg 26	Standard valve VUVS  Pg 26	Namur valve VSNC  Pg 27	Hand lever valve VHER  Pg 27
VALVES	Proportional pressure regulator VEAA/VEAB  Pg 31	Proportional flow control VEMD  Pg 31	Proportional flow control VEFC  Pg 32	Valve terminal VTUG  Pg 34	Valve terminal VTUS  Pg 34	Valve terminal MPA-FB-AP-VI  Pg 34
	Short stroke cylinder ADN-S  Pg 39	Short stroke cylinder ADN  Pg 39	Compact round cylinder DSNU-S  Pg 39	Standard cylinder DSBC  Pg 40	Standard round cylinder DSNU  Pg 40	Guided drive DFM  Pg 40
ACTUATORS	Long stroke gripper DHPL  Pg 43	Flat gripper HPPF  Pg 43	Semi rotary drive DRVS  Pg 43	Semi rotary drive DGSS  Pg 44	Semi rotary drive DRRS  Pg 44	
	Quarter turn actuator DFPD  Pg 46	Media separated valve VYKA  Pg 46	Solenoid valve VZWD  Pg 47	Pinch valve VZQA  Pg 47	Angle seat valve VZXA  Pg 48	Linear actuator DFPC  Pg 48
PROCESS	Linear positioning actuator DFPI  Pg 51	Corrosive resistance filter regulator PCRP  Pg 52	Sensor box SRBK  Pg 52	Media separated valve VYKC  Pg 53	Media separated valve VYKB  Pg 53	
	Cylinder switch SDBT-MSB  Pg 55	Cylinder switch SDBC-MSB  Pg 55	Cylinder switch SDBT-MSX  Pg 55	Cylinder switch SMT-8M/10M  Pg 55	Position sensor SRBS  Pg 56	Pressure sensor SPAN-B  Pg 56
AIR PREP & ACCESSORIES	Air preparation MS2-B  Pg 60	Air preparation MS4-B/MS6-B  Pg 60	Air preparation MS4/MS6  Pg 61	Pneumatic tube PUN-H/F  Pg 61	Push in connector NPQE  Pg 62	Push in connector NPQR  Pg 62
	Metal silencer AMTE  Pg 64	Suction cup VAS  Pg 65	Pressure Vacuum Generator PGVA  Pg 65			

Stepper motor
EMMT-ST



Pg 18

Simplified series compact
electric cylinder
EPCS



Pg 18

Simplified series mini
slide
EGSS



Pg 19

Simplified series
electrical drive
ELGS



Pg 19

Simplified series rotary
drive
ERMS



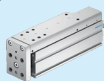
Pg 20

Compact electrical
cylinder
EPCC



Pg 20

Mini slide
EGSC-BS



Pg 22

Rotary gripper module
EHMD



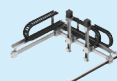
Pg 23

Electric gripper
HEPP



Pg 23

Miniature gantry
EXCL



Pg 23

Manual valve
VHEF



Pg 28

Mechanical valve
VMEF



Pg 28

Vacuum generator
OVEL



Pg 29

Vacuum generator
VN



Pg 29

Vacuum generator
OVEM



Pg 30

Proportional pressure
control
VPPE



Pg 30

Valve terminal
VTSA-FB-AP



Pg 35

Valve terminal
VTUX



Pg 35

Valve terminal
VTEP



Pg 36

Harsh environment
pilot valve
VOFC



Pg 36

Harsh environment
pilot valve
VOFD



Pg 37

Proportional
solenoid valve
VPWS



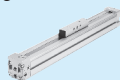
Pg 37

Mini slide
DGST



Pg 41

Linear drive
DGC-K



Pg 41

Guided linear drive
DGC



Pg 41

Parallel gripper
DHPC



Pg 42

Angular gripper
DHWC



Pg 42

Radial gripper
DHRC



Pg 42

Actuator assembly
unit
KDFP



Pg 49

Butterfly valve
assembly unit
KVZA



Pg 49

Ball valve
assembly unit
KVZB



Pg 49

Sensor box
SRBC



Pg 50

Positioner
CMSX



Pg 50

Positioner
CMSH



Pg 51

Pressure sensor
SPAN



Pg 57

Pressure sensor
SDE5



Pg 57

Flow sensor
SFAH



Pg 58

Flow sensor
SFAM



Pg 58

Push in connector
QS



Pg 62

Flow control valve
VFOE



Pg 63

Metal flow control valve
GRLA/Z-D



Pg 63

Piloted check valve
HGL



Pg 63

Pressure regulator
VRPA



Pg 64

Silencer
U



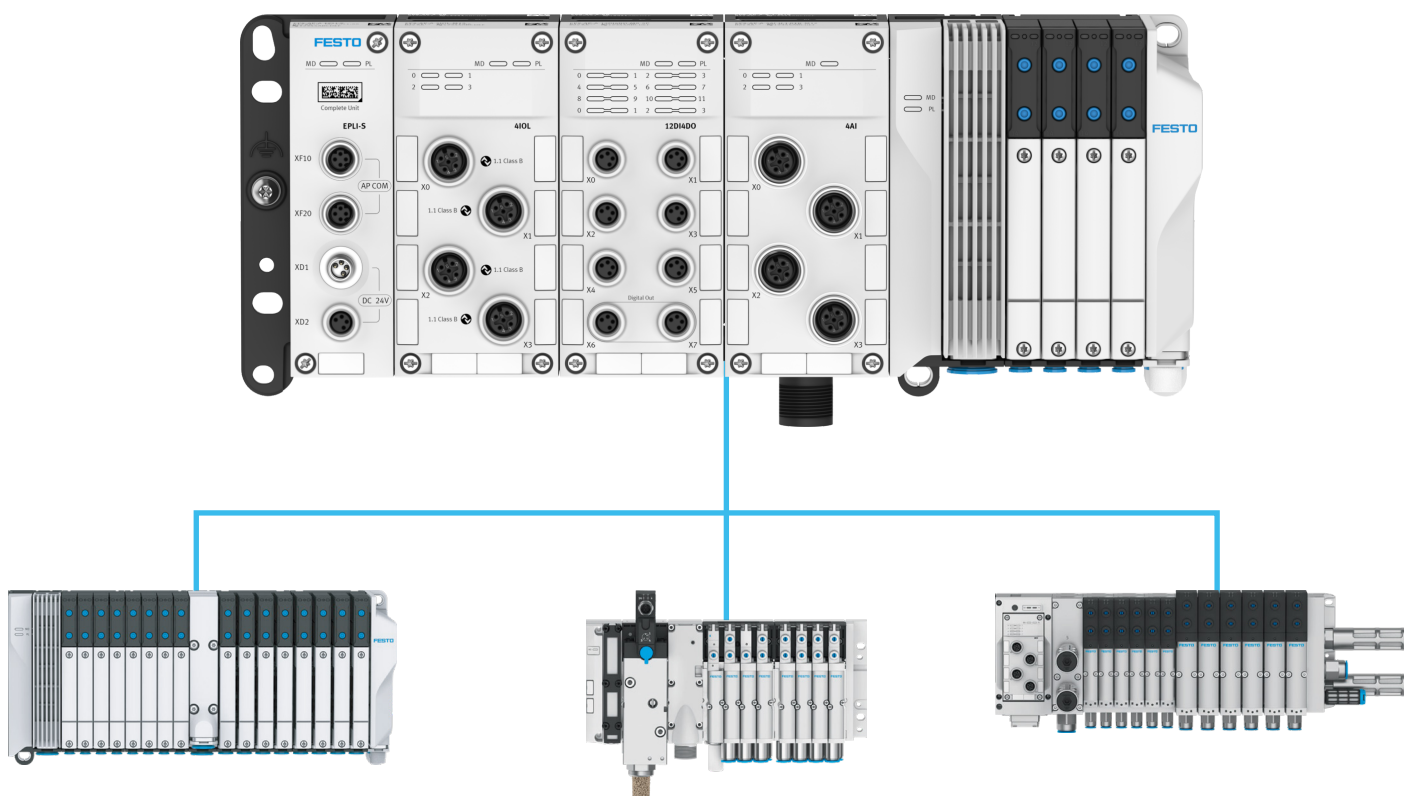
Pg 64

Modular Remote I/O System CPX-AP-A

Stand alone system or with valve terminal

Highlights

- Highly flexible remote IO system in IP65/IP67
- Stand-alone system or in combination with a valve terminal from Festo
- Various I/O modules and IO-Link® are available, including for electric drives
- Maximum level of performance thanks to AP communication in real time: 200 MBaud and 250 µs cycle time
- Simple and convenient configuration, quick commissioning of the entire AP system architecture



Valve terminal VTUX – maximum functionality and modularity

Compact and lightweight: the versatile, highly modular valve terminal VTUX is ideal for electronics and battery production. The valves and the two sub-base sizes can be positioned in any order within the terminal. There are two sub-base sizes: compact and high-flow. The high-performance valve size offers a maximum flow rate of up to 670 l/min with different tubing diameters.

Valve terminal MPA-S – compact and versatile

The compact and versatile valve terminal MPA-S with aluminium base plates offers two valve sizes, and can be mixed and matched on the valve terminal. There is also an option to integrate functions for proportional valves, pressure sensors as well as vertical stacking. Manual override and the two-colour diagnostics LED on each valve ensure reliable commissioning.

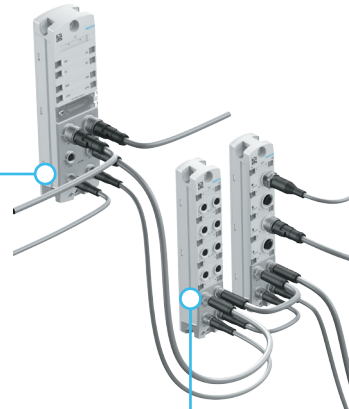
Valve terminal VTSA – standardised and versatile

This flexibly configurable valve terminal is sturdy and durable, and is available in several sizes in accordance with ISO 15407-2 / 5599-2 (VTSA-FB-AP) or as flow-optimised variant (VTSA-F-FB-AP / VTSA-FCB-AP). Four sizes can be mixed and matched without an adapter plate. The VTSA features various options for function integration, innovative functional modules (pneumatic and mechanical) and numerous safety functions.

Distributed Remote I/O



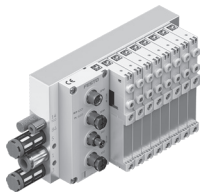
Supported Fieldbus



CPX-AP-I : Keep your control closer to the process

Robust IP68/67 Digital & Analog I/O module

VTUG/MPAL valve Terminals



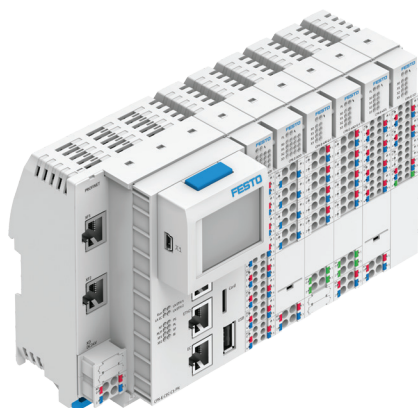
IO-Link Master for Field connection



IO-Link



Controls



PLC/Modular/Motion/Robotic Controller CPX-E

- CPX-E is a high-performance controller for automation system focusing primarily on motion & robotic controls
- Multi protocol connection widely available
- Extended software functions for seamless integration and simplified control of electric drives
- The following modules are available:
 - PLC/Motion/Robotic Controller
 - Multi Protocol bus Interface modules
 - Input/output modules
 - IO-Link master modules
 - Encoder Module

Frequently bought together



VTUG



CMMT-AS



EMMB-AS



CMMT-ST



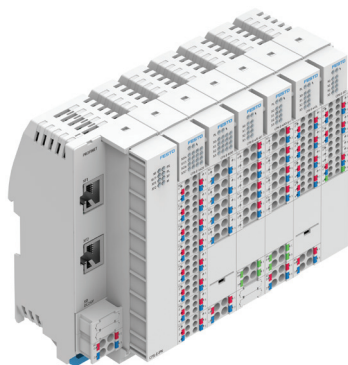
EMMB-ST



EMMT-ST



CPX-AP-I



Remote I/O system CPX-E

- Reliable & cost effective remote I/O system
- Multi protocol bus interface module
- The following modules are available:
 - Input/output modules
 - IO-Link master modules



NEBU

Frequently bought together

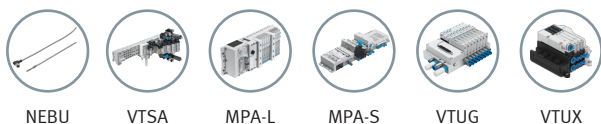




Modular electrical terminal CPX-AP-A

- Comprehensive function integration with technology modules
- Modular and lightweight IO system in IP65/IP67
- Multi Protocol bus Interface modules widely available
- Connect up to Max 79 AP device
- Installation variants
 - Stand-alone as remote I/O
 - With valve terminal VTSA, MPA-L, MPA-S, VTUG, VTUX
- I/O modules
 - Digital
 - Analogue

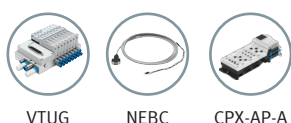
Frequently bought together



Distributed Remote I/O system CPX-AP-I

- IP65/IP67 Remote I/O system brings input/output controls closer to equipment or process, no electrical panel is needed to mount CPX-AP-I modules.
- Cost effective remote I/O system with up to 80 freely combinable modules/valve terminals per bus interface, up to 50 m between every module
- Easy to adapt to difference control system by exchanging the bus interface
- Realtime capability
- Extremely easy to assemble & integrate
- The following modules are available:
 - Multi Protocol bus Interface modules
 - Input/output modules
 - IO-Link master
 - Interface to the valve terminal

Frequently bought together



Controls



Human-Machine Interface CDPX

- Linux Operating system
- Display Size: 4.3", 5", 7", 10.4", 15", 21" Inch
- Built in Ethernet port and Serial port available
- Remote target visu and chromium brower
- Optional: PLC with codesys ,I/O , CANopen

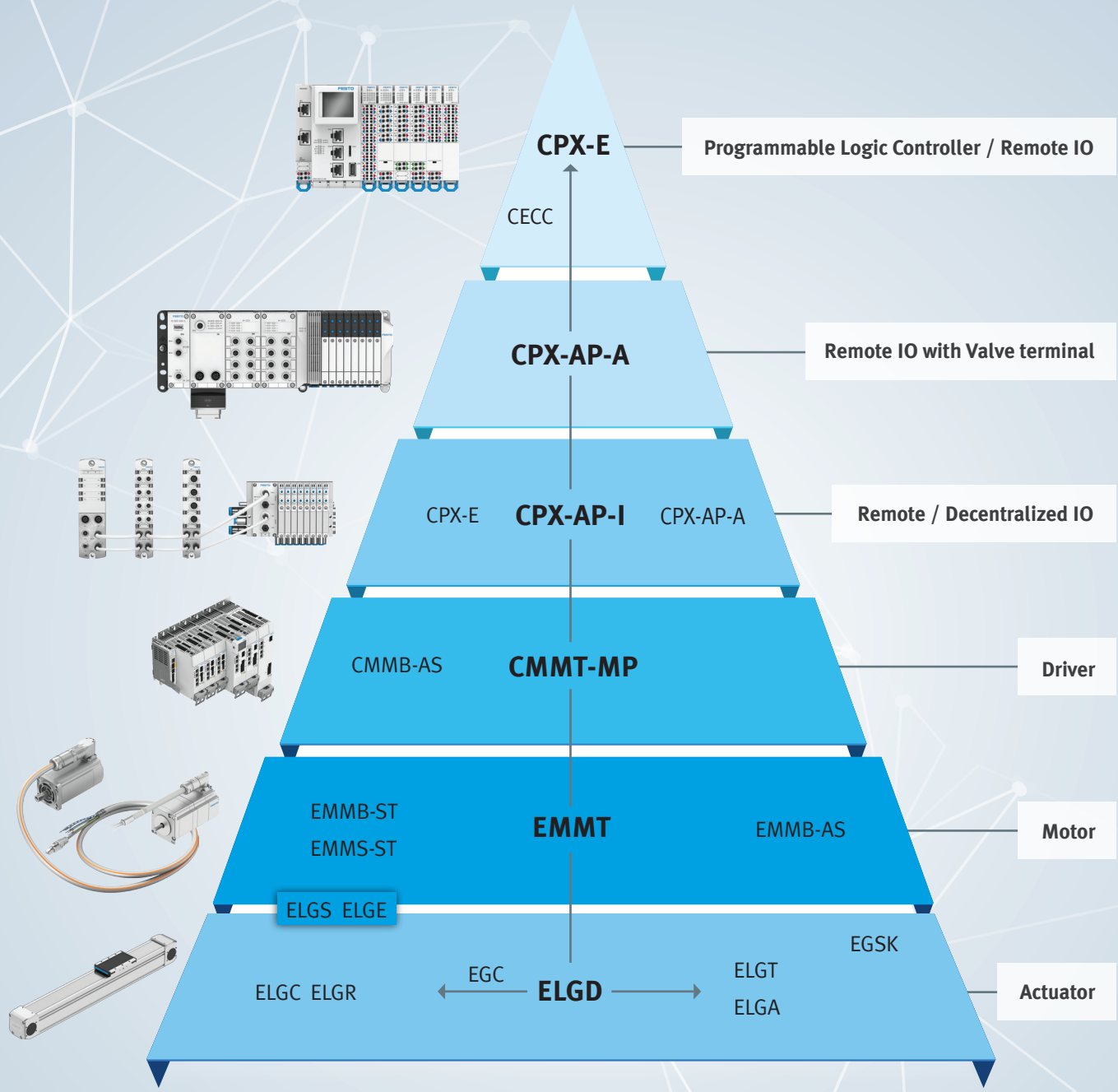
Frequently bought together



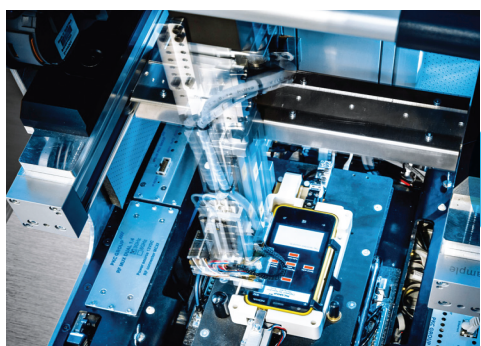
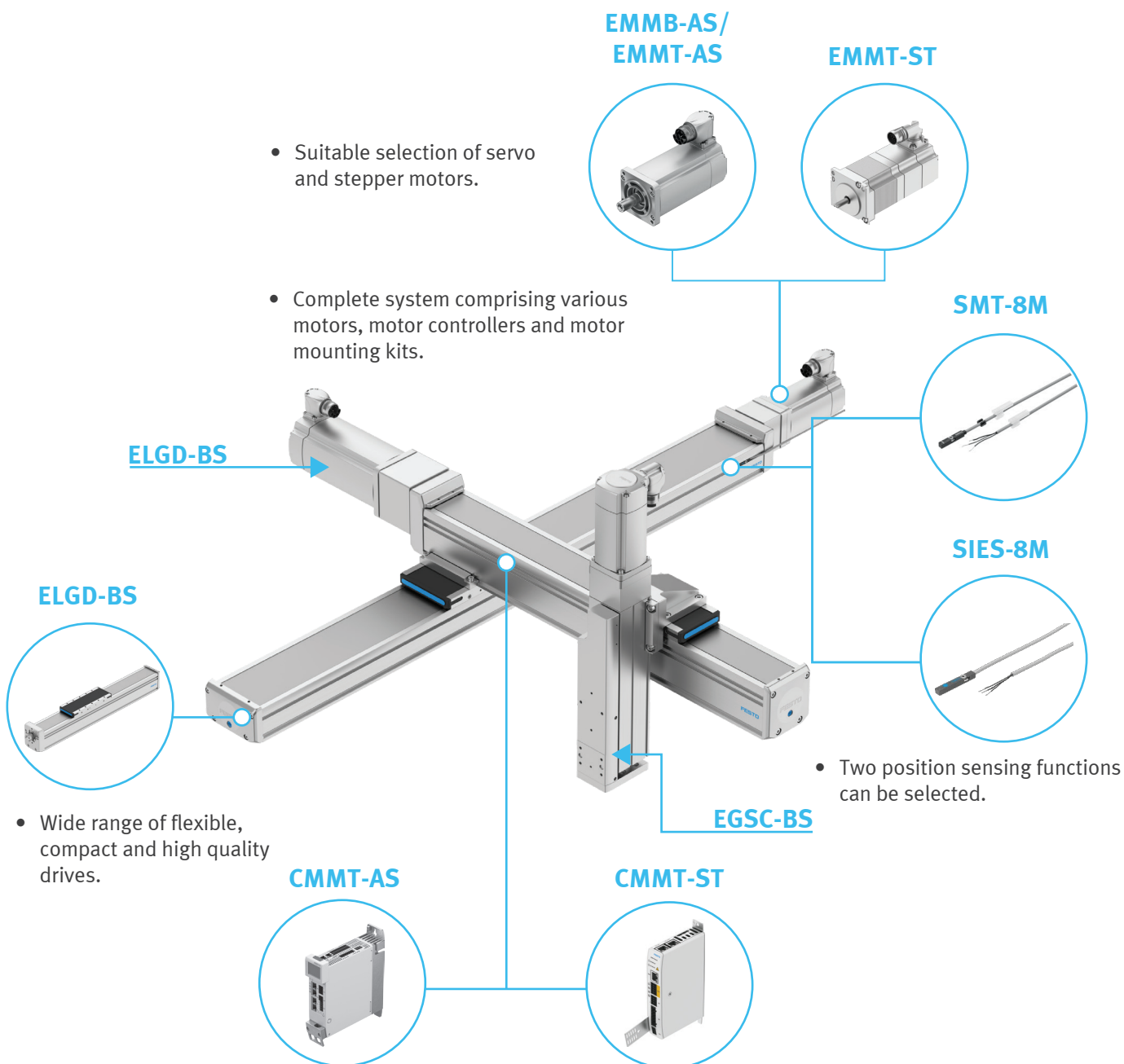
CPX-E



Powering Electric Automation



Spindle axes ELGD-TB/BS



Compact and precise testing unit in assembly line

- Variety of controllers equipped with the latest technology.

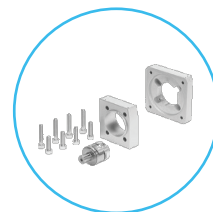
Servo drives CMMT-AS

- Easy to integrate into Ethernet-based (All-in-one) host systems with extensive documentation and function blocks

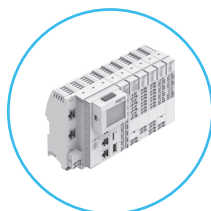


- Specific kit for all electro-mechanical axes from Festo.
- Each kit includes coupling housing, couplings, motor flange and screws.
- IP65 is available as option.

EAMM

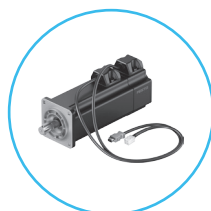


CPX-E

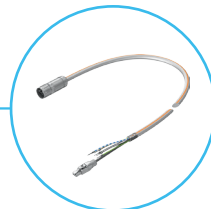


- High-performance control and automation system focusing primarily on motion control functions

EMMB-AS

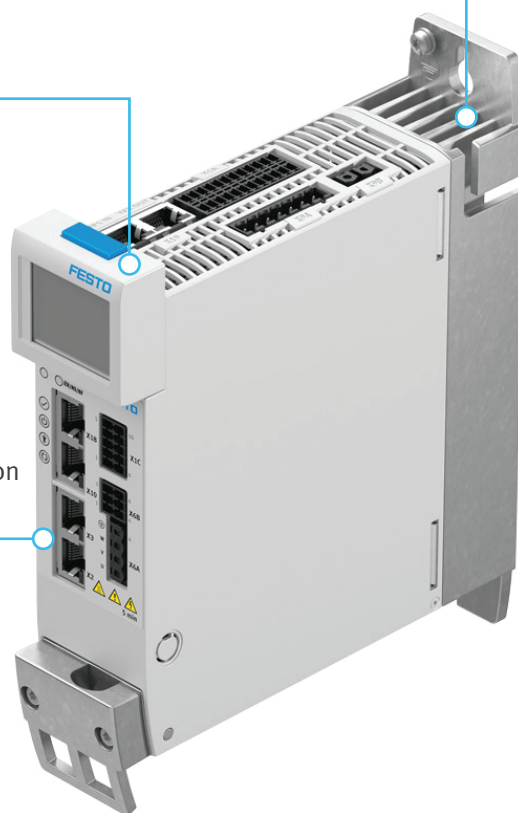
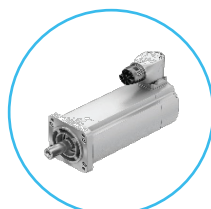


NEBM



- Motor cables with degree of protection to IP67.

EMMT-AS



- Suitable selection of servo motors.



Complete motion control in packaging line



Transfer of blood samples in and out of the cold storage system



AC servo drives economical CMMB-AS (For use with EMMB-AS motor)

- Complete integration of all components for controller and power unit, including RS232 and pulse direction interface
- Operated as a torque, rotational speed or position controller
- Nominal voltage: 230 V AC
- Nominal current: 1.5 ... 7 A
- Nominal power: 100 ... 750 W

Frequently bought together



EMMB-AS



AC servo drives high performance CMMT-AS

- Precise force, speed and position control
- Auto-tuning and automatically optimises of control behaviour
- Multi-protocol, the required protocol can be selected via software or directly on the servo drive
- Sustainable operation thanks to energy recovery
- Nominal voltage: 1 phase 230 and 3 phase 400 V AC
- Nominal current: 2.8 ... 29 A
- Nominal power: 0.35 ... 12kW

Frequently bought together



EMMB-AS



CMMT-AS



Extra low voltage servo drives CMMT-ST

- Space-saving low voltage servo drive for stepper motors and brushless direct current motors (BLDC or EC motor)
- Integrated safety functions STO (safe torque off) - Cat 3, Ple / SIL 3 / SILCL 3 ensure safe operation
- Sustainable operation thanks to energy recovery
- The new multiprotocol variant (CMMT-...-MP) has all fieldbuses (PROFINET, EtherCAT®, EtherNet/IP, Modbus®) integrated in one servo drive hardware
- 150 W at 24 V DC, 300 W at 48 V DC
- Nominal current 8 A (peak 10 A)

Frequently bought together



EMMB-ST



CMMT-ST





AC servo motors economical EMMB-AS

- Size: 40, 60, 80
- Rated torque: 0.32 ... 2.39 Nm
- Nominal current: 1.3 ... 3.8 A
- Brake and Keyway option
- Single-turn/Multi-turn encoder options

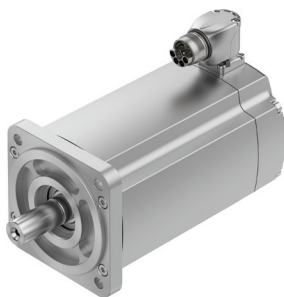
Frequently bought together



CMMT-AS



CMMB-AS



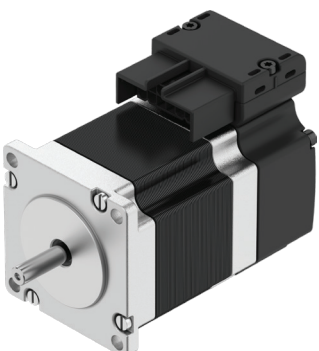
AC servo motors high performance EMMT-AS

- Simple connection technology (OCP: one cable plug)
- Single-turn and Multi-turn (battery-less) EnDat 2.2 encoder technology
- Size: 60, 80, 100, 150, 190
- Nominal torque: 0.6 ... 82.4 Nm
- Voltage: 325 ... 680 V DC
- Nominal current 1.4 ... 20 A

Frequently bought together



CMMT-AS



Stepper motors economical EMMB-ST

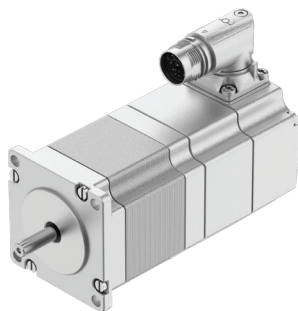
- Simple connection technology (OCP: one cable plug)
- Single-turn and Multi-turn (battery-less) encoder
- Size: 42, 57, 87
- Holding torque: 0.22 ... 5.9 Nm
- Voltage: 24 ... 48 V DC
- Nominal current: 1.4 ... 9.5 A
- IP20

Frequently bought together



CMMT-ST





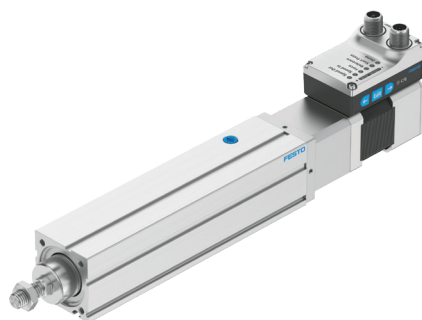
Stepper motors High Performance EMMT-ST

- Simple connection technology (OCP: one cable plug)
- Single-turn and Multi-turn (battery-less) EnDat 2.2 encoder technology
- Size: 42, 57, 87
- Holding torque: 0.22 ... 9.3 Nm
- Voltage: 24 ... 48 V DC
- Nominal current: 1.4 ... 9.5 A
- IP65

Frequently bought together



CMMT-ST



Simplified series compact electrical cylinder actuators EPCS

- Simplified rod type ball screw actuator series for easy setup
- Easy control with only 2 digital inputs
- Precise closed-loop control of speed, position and force
- Size: 32, 45, 60
- Stroke length: 25 ... 500 mm
- Force: 150 ... 900 N
- Speed up to 0.22 m/s



Frequently bought together

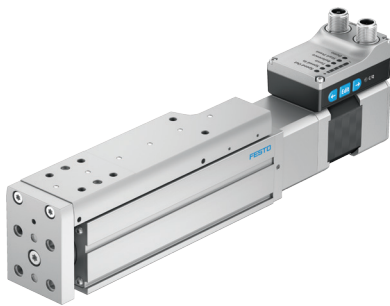


NEBC



SMT-8M-A





 **IO-Link**

Simplified series mini slide actuators EGSS

- Simplified guided ball screw actuator series for easy setup
- Easy control with only 2 digital inputs
- Precise closed-loop control of speed, position and force
- Size: 32, 45, 60
- Stroke length: 25 ... 200 mm
- Force: 60 ... 250 N
- Speed up to 0.25 m/s

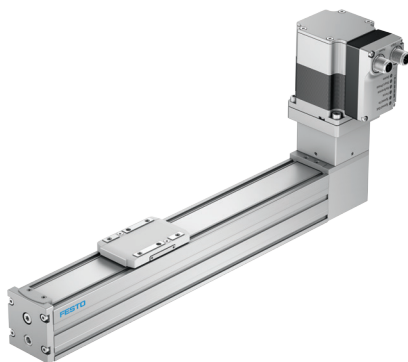
Frequently bought together



NEBC



SMT-8M-A



 **IO-Link**

Simplified series spindle and toothed belt actuators ELGS

- Simplified protected ball screw and toothed belt actuator series for easy setup
- Easy control with only 2 digital inputs
- Precise closed-loop control of speed, position and force
- ELGS-BS
 - Size: 32, 45, 60
 - Stroke length: 100 ... 800mm
 - Force: 40 ... 200 N
 - Speed up to 0.025 m/s
- ELGS-TB
 - Size: 45, 60
 - Stroke length: 200 ... 2000mm
 - Force: 65 ... 75 N
 - Speed up to 1.3 m/s

Frequently bought together



NEBC



SMT-8M-A





Simplified series rotary actuators ERMS

- Simplified rotary actuator series for easy setup
- Easy control with only 2 digital inputs or IO-Link
- Precise closed-loop control of speed, position and force
- Size 25, 32
- Rotation angles 90°, 180°
- Peak torque 2.7 ... 5.6 Nm
- Speed up to 150 RPM



Frequently bought together



NEBC



Compact electric cylinders EPCC

- Rod style ball screw actuator
- Size: 25, 32, 45 and 60
- Stroke: 25 ... 500 mm
- Force: 75 ... 1000 N
- Speed up to 0.6 m/s

Frequently bought together



EMMB-AS



EMMT-AS



EMMB-ST



EMMT-ST



SMT-8M-A/
SIES-8M



Electric cylinders ESBF

- Rodstyle ball/lead screw actuator
- Motor can be mounted using axial or parallel kit
- Size: 32, 40, 50, 63, 80, 100
- Stroke length: 30 ... 1500 mm
- Force: 600 ... 17000 N
- Speed up to 1.35 m/s
- Optional: Electric ball screw cylinder with clean design (food application)

Frequently bought together



CMMB-AS



EMMB-AS



CMMT-AS

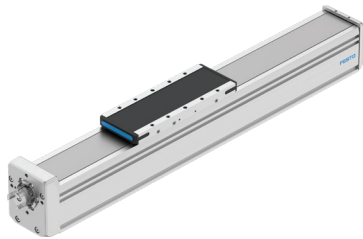


EMMT-AS



SMT-8M-A





Spindle actuators ELGD-BS

- Protected ball screw actuator
- Size: 60, 80
- Stroke length: 100 ... 2000 mm
- Force: 1550 ... 2650 N
- Speed up to 1.67 m/s
- Repetition accuracy ± 0.01 mm

Frequently bought together



EMMB-AS



CMMB-AS



CMMT-AS



EMMB-ST



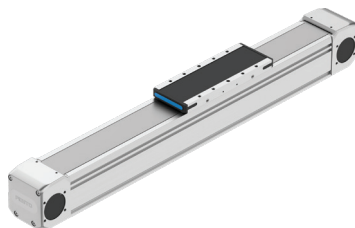
EMMT-ST



CMMT-ST



SIES-8M



Toothed belt actuators ELGD-TB

- Protected toothed belt actuator
- Size: 60, 80
- Stroke length: 200 ... 2850 mm
- Force: 350 ... 800 N
- Speed up to 3m/s
- Repetition accuracy ± 0.04 mm

Frequently bought together



EMMB-AS



CMMB-AS



CMMT-AS



EMMB-ST



EMMT-ST



CMMT-ST



SIES-8M/
SMT-8M-A



Toothed belt actuators EGC-TB

- Toothed belt actuator
- Size 50, 70, 80, 120, 185
- Stroke length 50 ... 8500 mm
- Force 50 ... 2500 N
- Speed up to 5 m/s
- Repetition accuracy ± 0.08 mm (± 0.1 mm for size 185)

Frequently bought together



CMMB-AS



EMMB-AS



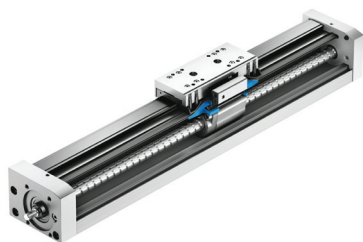
CMMT-AS



EMMT-AS



Electrics



Spindle actuators EGC-BS

- Protected ball screw actuator
- Size: 70, 80, 120, 185
- Stroke length: 50 ... 3000 mm
- Force: 400 ... 3000 N
- Speed up to 2 m/s
- Repetition accuracy ± 0.02 mm

Frequently bought together



CMMB-AS



EMMB-AS



CMMT-AS



EMMT-AS



Spindle actuators ELGT-BS

- Protected ball screw actuator
- Size 90, 120, 160
- Stroke length: 50 ... 1400 mm
- Force up to 1575 N
- Speed up to 1 m/s
- Repetition accuracy ± 0.02 mm
- Optimised for use in the electronics and automotive industry as well as in battery production

Frequently bought together



CMMB-AS



EMMB-AS



CMMT-AS



EMMT-AS



Mini slides EGSC-BS

- Guided ball screw actuator
- Size 25, 32, 45, 60
- Stroke length 25 ... 200 mm
- Speed up to 0.6 m/s
- Integrated recirculating ball bearing guide

Frequently bought together



CMMB-AS



CMMT-AS



EMMB-AS



EMMT-AS



EMMB-ST



EMMT-ST



CMMT-ST



SIES-8M





Rotary gripper module EHMD

- Compact, Ideal for capping/decapping and Pick&Place application
- Infinite rotational gripper
- Choice of electrical or pneumatic gripping
- Self-locking in case of energy loss
- Optional: mounting with Z-compensation compensates for the thread pitch of covers on vials during opening and closing
- Max. Rotation Torque: 1.0 Nm
- Max.Speed: up to 240rpm
- Stroke per gripper jaw: 0...5mm or 0...15mm

Frequently bought together



CMMT-ST



NEBU



NEBM



High Performance Electric Gripper HEPP

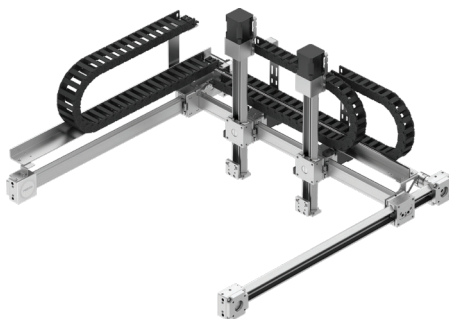
- Integrated Toothed Belt, Motor and Controller in One
- Multi Protocol bus Interface modules widely available
- Size: 28, 36, 42
- Stroke length: 30 ... 56 mm
- Gripping Force: 320 ... 680 N
- Repetition accuracy ± 0.02 mm"



CPX-E



Frequently bought together



Miniature 3-D Gantry EXCL

- Max. stroke:
 - X/Y-axis: 1000 x 700 mm
 - Z-axis: 50, 100, 150 or 200 mm with 1 or 2 Z-axes
- Max. payload: 1.5 kg (with 2 Z-axes together max. 2 kg)
- Optional 6-axis motion controller
- Programmable via G-code
- Max. acceleration: 1 m/s²
- Max. speed: 0.4 m/s

Frequently bought together



CMXL



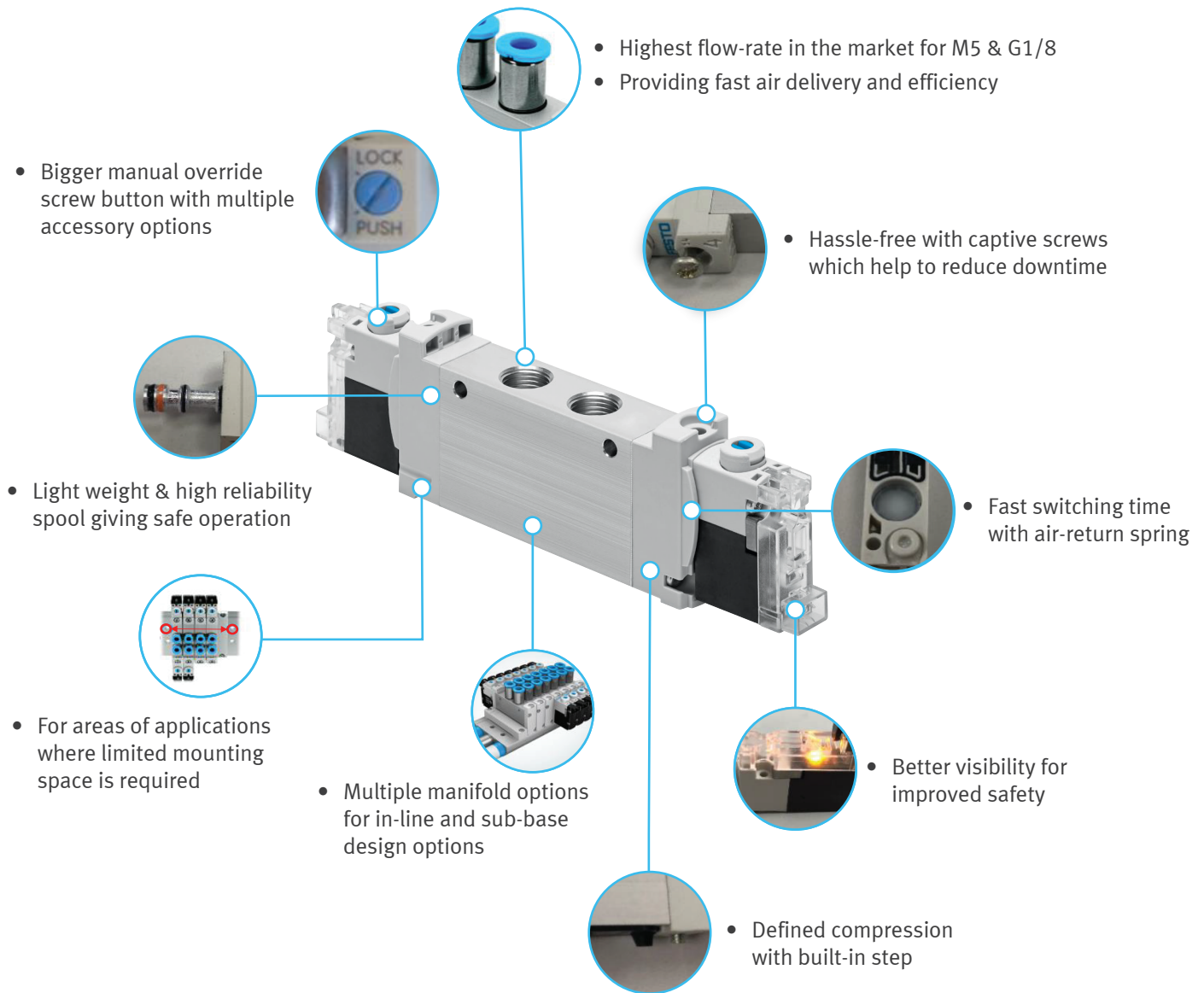
EHMD



VTOI



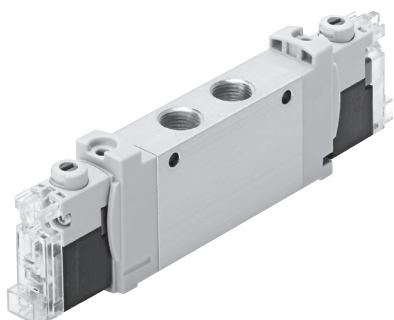
Valve VUVG



Used in textile machine for fast speed production of button hole



Gentle placement of large metal sheets from a transport system to a stack by multiple cylinders



Individual valves VUVG-...-S

- Connection M5, M7, G1/8, G1/4
- Flow rate 180... 660 l/min
- Pressure range 1.5 ... 7 bar
- Temperature range -5 ... +50°C
- Voltage 24 V DC
- In-line valves, semi in-line valves, sub-base valves
- Electrical actuated, piloted
- Pneumatic spring return

Frequently bought together



QS



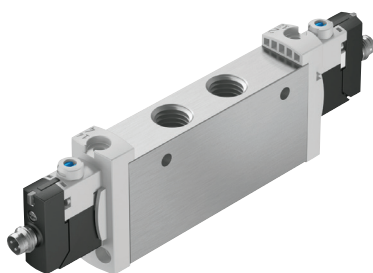
AMTE



NPQE



PUN-H



Individual valves VUVG

- Connection M3, M5, M7, G1/8, G1/4
- Flow rate 90 ... 1380 l/min
- Pressure range -0.9 ... 10 bar
- Temperature range -5 ... +60°C
- Voltage 5, 12, 24 V DC
- In-line valves, semi in-line valves, sub-base valves
- Electrical actuated, piloted
- Pneumatic and mechanical spring return

Frequently bought together



QS



AMTE

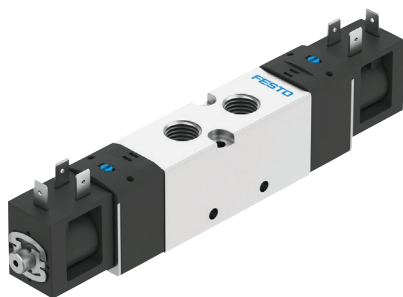


NPQE



PUN-H





Individual valves VUVS-...-S

- Port G1/8, G1/4, G3/8
- Flow rate 500 - 1600 l/min
- Pressure range 1.5 ... 8 bar
- Temperature range -5 ... +50°C
- Voltage 24 VDC
- In-line valve , manifold
- Electrically actuated, piloted
- Pneumatic spring return

Frequently bought together



QS



AMTE



NPQE



PUN-H



Individual valves VUVS

- Port G1/8, G1/4, G3/8
- Flow rate 500 - 2400 l/min
- Pressure range 1.5 ... 8 bar
- Temperature range -5 ... +50°C
- Voltage 12,24 VDC. 24,110, 230 VAC
- In-line valve , manifold
- Electrically actuated, piloted
- Pneumatic and mechanical spring return

Frequently bought together



QS



AMTE

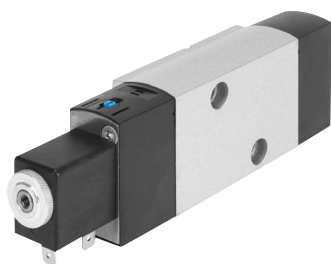


NPQE



PUN-H





SIL certified
according IEC 61508

Individual valves VSNC

- Connection: G1/8, G1/4, NPT1/4
- Flow rate: 800 ... 1250 l/min
- Operating pressure: 1.5...10 bar
- Voltage: 12, 24, 48 V DC, 24, 48, 120, 230 V AC
- NAMUR port pattern to VDE/VDI 3845
- Solenoid-actuated, piloted / CNOMO interface
- Mechanical spring return
- Explosion proof: Ex ia, Ex d, Ex m, Ex na
- Convertible from 5/2-way function to 3/2-way function

Frequently bought together



QS



MGXDH



MGXIAH



DFPD



Hand level valves VHER

- Valve function 4/3. Mid closed, open or pressurised
- M5, G1/8, G1/4, G1/2 connection
- Metal and polymer lever
- Vacuum operation possible
- Flow rate 170 - 3800 l/min

Frequently bought together



QS



AMTE



NPQE



PUN-H





Manually operated valves VHEF

- Valve function 3/2, 5/2, 5/3
- G 1/8, G 1/4 connection
- Selector switch, finger level, hand lever, toggle lever, push-button
- Directly/ Indirect actuated
- Vacuum operation possible
- Flow rate 650 - 1200 l/min

Frequently bought together



QS



AMTE



NPQE



PUN-H



Mechanically actuated valves VMEF

- Valve function 3/2, 5/2
- G 1/8, G 1/4 connection
- Toggle lever, Roller, Stem
- Directly actuated, pneumatic piloted
- Vacuum operation possible
- Flow rate 750 - 1200 l/min

Frequently bought together



QS



AMTE

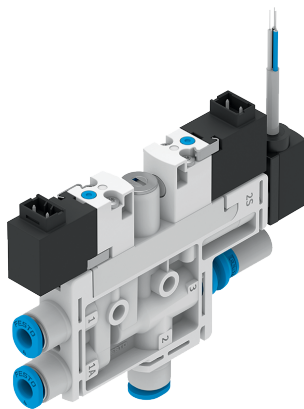


NPQE



PUN-H





Vacuum generators OVEL

- Mounting on supply manifold with max. 8 spaces
- Nominal size: 0.45 ... 0.95 mm
- Connection:
 - Push-in connector QS3, QS4, QS6
- Vacuum solenoid valve ON/OFF
- Optional with ejector pulse
- Integrated vacuum sensor

Frequently bought together



QS



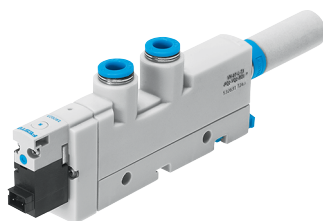
VAS



NPQE



PUN-H



Vacuum generators VN

- Nominal size 0.45 to 3 mm
- Connection:
 - Plug connector QS4, QS6, QS8, QS10, QS12
 - Thread M5, G1/8, G1/4, G3/8
- Standard:
 - Vacuum port 90° to supply port
- Inline:
 - Vacuum port in line with supply port
- Pneumatic ejector pulse valve or Integrated vacuum switch

Frequently bought together



QS



VAS



NPQE



PUN-H





Vacuum generators OVEM

- Adjustment of the ejector pulse
- Visualisation of vacuum pressure via LCD display
- Pneumatic ejector pulse valve or Integrated vacuum switch.
- Nominal size 0.45 to 3 mm
- Vacuum generator characteristics
 - High vacuum
 - High suction rate
 - Normally opened
 - Normally closed
- Switching output
 - NPN
 - PNP
 - IO-Link®

Frequently bought together



VAS

NPQE

QS

PUN-H



Proportional pressure control VPPE

- Suitable for secondary battery production application
- Assembly as in-line valve or on profile strip
- Visualisation of pressure via 7 segments LED display
- Setpoint input : 0...5, 0...10V & 4...20mA
- Connection G1/8
- Flowrate: 310- 1250 l/min
- Pressure range
 - 0.02 ... 2 bar
 - 0.06 ... 6 bar
 - 0.1 ... 10 bar

Frequently bought together



NEBA

PUN-H

QS

NPQE



Proportional pressure regulators VEAA & VEAB



- High precision and stable
- Very low power consumption
- Integrated piezo technology
- Silent operation
- Efficient pressure regulation characteristics
- Integrated pressure sensor
- Setpoint input : 0...5V, 0...10V & 4...20mA
- Setpoint output : 1...5V, 0...10V & 4...20mA
- VEAA
 - Flowrate: 7 l/min
 - 3 Pressure regulation ranges from 0.02 to 10 bar
- VEAB
 - Flowrate: 20 l/min
 - 9 Pressure regulation ranges from -1 to 6 bar

Frequently bought together



NEBA



PUN-H



Proportional flow regulators VEMD



- Mass flow controller (MFC) with integrated control electronics
- Dynamic and precise flow regulation with short response time
- Operating medium: air, oxygen, inert gases, nitrogen
- Minimal power consumption thanks to piezo technology
- Silent operation
- Flowrate regulation range: 0...200 l/m
- Operating voltage: 12 or 24 V DC
- Operating pressure: 0...2.5 bar
- Setpoint input & output: 0.2...10V

Frequently bought together



NEBA



PUN-H



QS



NPQE





Proportional flow control VEFC

- Very compact with 24 mm wide
- Directly controlled, dynamic piezo valve
- Very flexible via customisable control parameters
- Connection R1/4 , G1/4
- Pressure range 3...7 bar
- Flow rate 10...200 l/min
- Set point 0-10V , 4- 20mA

Frequently bought together



KMP6-09Pv



NPQE



QS



PUN-H



Valve Terminal VTUG

VUVG-S



- Semi-inline valves for manifold assembly
- Fast troubleshooting thanks to 360° LED display
- Can be replaced quickly and easily
- Various choices of manual override

VAEM



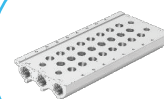
- Variable multi-pin plug connection using Sub-D or ribbon cable
- Support AP communication system

CTEU

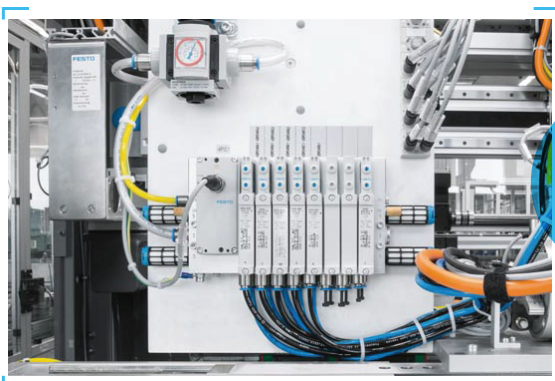
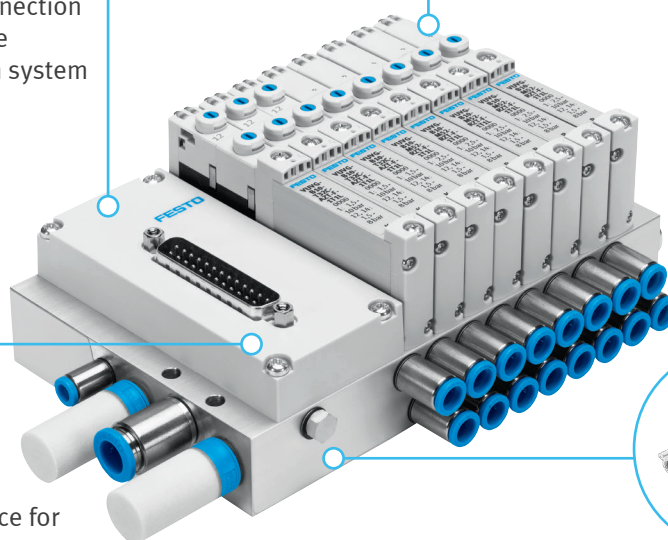


- Festo-specific I-Port interface for bus nodes
- IO-Link® mode for direct connection to a higher-order IO-Link® master

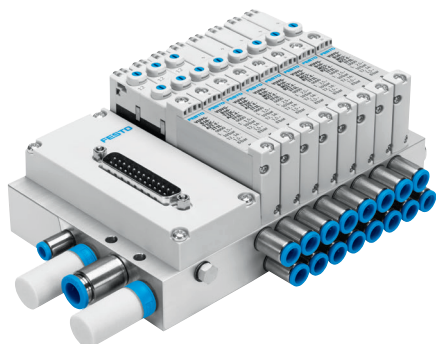
VABM



- Multiple pressure zones available
- Internal or external pilot air in the same manifold rail
- Reversible piston spool valves with up to 24 valve positions



Compact
and high
flow
rates!



Valve terminal VTUG

- Flow rate: 220 ... 1300 l/min
- Valve size 10, 14, 18 mm
- Multi-pin / IO-Link / I-Port connection/
Multi-Protocol Fieldbus available
- Voltage 24 V DC
- Pressure -0.9 ... 10 bar
- Degree of protection IP40/IP67
- Semi in-line and sub-base valves
- Control-cabinet option available

Frequently bought together



QS



NPQE



PUN-H



Valve terminal VTUS

- Flow rate 700 ... 2000 l/min.
- Valve size 20, 25, 30 mm
- Individual electrical connection
- Voltage 12, 24 V DC, 24, 110, 120, 230, 240 V AC
- Pressure -0.9 ... 10 bar
- Degree of protection IP65, IP67
- Inline valves
- Solenoid/Pneumatic actuated
- Metal manifold block

Frequently bought together



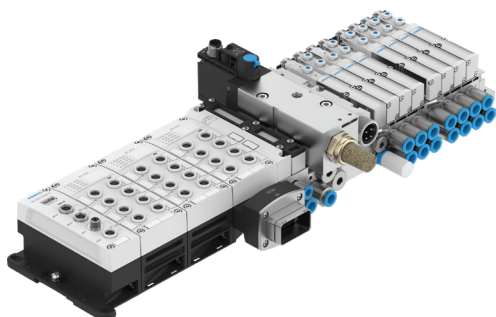
QS



NPQE



PUN-H



Valve terminals MPA-FB-AP-VI

- Mix of valve size for optimum flowrate
- Flow rate 360 to 700 l/min
- Valve size 10, 14, 20 mm
- Expandable up to 64 valve positions with 128 solenoid coils
- IO-Link / Multi-Protocol interface ready
- Diagnostics function available
- Function integration with proportional pressure regulator VPPM

Frequently bought together



NEBA



PUN-H

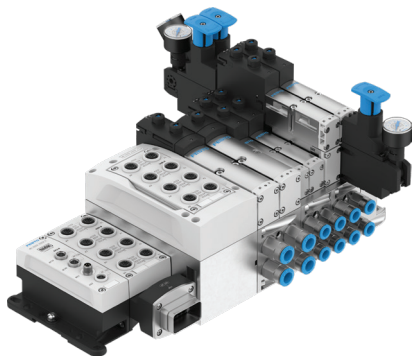


QS



NPQE





Valve terminals VTSA-FB-AP

- Mix of valve size for optimum flowrate
- Flow rate 770 ... 4000 l/min
- Valve size 18, 26, 42, 52 mm
- Maximum 32 valves position
- IO-Link / Multi-Protocol interface ready
- Diagnostics function available
- Function integration with safely related pneumatic and vacuum generator

Frequently bought together



NEBA

PUN-H

QS

NPQE



Valve terminal VTUX

- High flow rates up to 670 l/min
- Up to 32 solenoid coils
- Lightweight, made of high-performance polymer
- Extremely flexible for communication with CPX-AP-I, CPX-AP-A, IO-Link and multipin system.
- Highly modular sub-bases with different widths for different flow rate with the same valves
- Flexibly configurable push-in fittings as a cartridge, easy to exchange in just a few simple steps
- It combines all the benefits of CPV, MPA and VTUG in one platform
- Suitable for secondary battery production application

Frequently bought together


NEBV-S1G25
NEBV-S1WA44

NEBV-M12G8
NEBV-M8W4L

PUN-H





Valve terminal VTEP

- Simple electrical connections via EtherCAT
- Pressure and vacuum control can be combined
- Flexible: 2 ... 10 channels, 1 ... 5 valves
- Flow rate up to 35 l/min
- Powered by Piezo technology
- No wear
- No tear
- No particle abrasion
- No heat generation
- Low power consumption

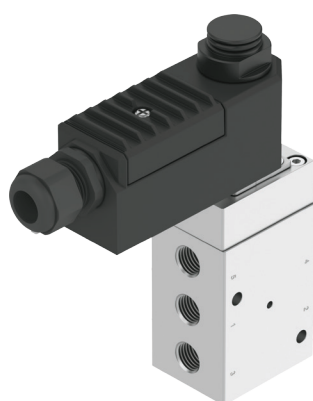
Frequently bought together



CPX-E-CEC



PUN-H



Harsh environment pilot valve VOFC

- Titanium coated valve body (option: stainless steel)
- Connection type: In-line, NAMUR interface
- Connection size: 1/4", 1/2" (G / NPT thread)
- Operating pressure: 2.5...8 bar
- Flow rate: 595...2686 l/min
- Valve type: 3/2 way, 5/2 way single or double solenoid
- Voltage: 24V, 110V, 230V (AV/DC)
- Ex protection: Ex ia, Ex m



SIL certified
according IEC 61508



Frequently bought together



DFPC



DFDP





SIL certified
according IEC 61508



Harsh environment pilot valve VOFD

- Titanium coated valve body (option: stainless steel, brass)
- Connection type: In-line, NAMUR interface
- Connection size: 1/4", 1/2" (G / NPT thread)
- Operating pressure: 0...12 bar
- Flow rate: 52...1900 l/min
- Valve type: 3/2 way single solenoid
- Voltage: 24V, 48V, 60V, 110V, 230V (AV/DC)
- Ex protection: Ex ia, Ex m, Ex d

Frequently bought together



DFPC



DFPD

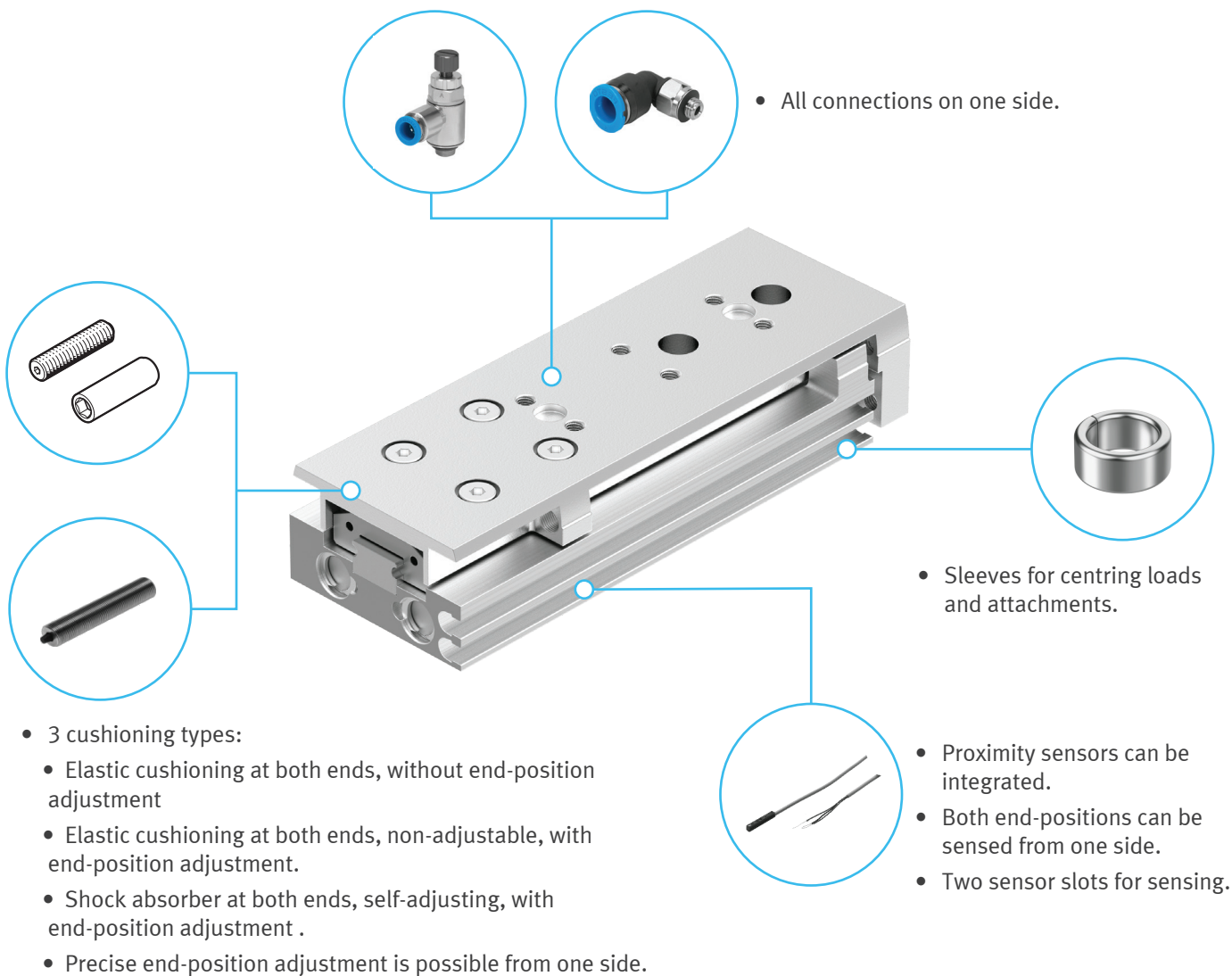


Proportional solenoid valve VPWS

- 2/2 way proportional gas flow valve
- Control signal: 0...225mA / 24V PWM (>3kHz)
- Operating voltage: 24 VDC
- Max pressure: 10 bar
- Flow rate: 1.3...310 l/min
- Stainless steel body
- Suitable for air, oxygen, neutral gases



Mini slides DGST



Lifting application with flexible mounting



Used in packaging line



Short stroke cylinder ADN-S

- Size : 6, 10, 12, 16, 20, 25, 32, 40, 50, 63mm
- Stroke length: 5, 10, 15, 20, 25, 30, 35, 40, 45, 50 mm
- Male and female thread
- Space and weight saving
- Double-acting and single acting
- Copper and zinc free variant available

Frequently bought together



SDBT-MSB
SDBC-MSB



VFOE



PUN-H



NPQE



QS



Compact cylinders ADN

- Compact cylinder
- Diameter: 12, 16, 20, 25, 32, 40, 50, 63, 80, 100, 125 mm
- Stroke length: 1... 500 mm
- Force: 68 ... 7363 N
- Double-acting / single acting
- Position sensing
- Fixed/self-adjusting cushioning
- Numerous variants

Frequently bought together



QS



PUN-H



NPQE



Compact round cylinders DSNU-S

- Compact round cylinder
- Diameter: 8, 12, 16, 20, 25 mm
- Stroke length: 10 ... 200 mm
- Force: 30 ... 294 N
- Double-acting
- Position sensing
- Fixed/self-adjusting cushioning 185)

Frequently bought together



SDBT-MSB



VFOE



PUN-H



NPQE



QS





Standard cylinders DSBC

- Standard cylinder with two sensor slots
- Numerous variants
- Diameter: 32, 40, 50, 63, 80, 100, 125 mm
- Stroke length: 1 ... 2800 mm
- Force: 483 ... 7363 N
- Double-acting
- Position sensing
- Fixed/adjustable/self-adjusting cushioning

Frequently bought together



SDBT-MSB



VFOE



PUN-H



NPQE



QS



Standard round cylinders DSNU

- Diameter: 8, 10, 12, 16, 20, 25, 32, 40, 50, 63 mm
- Stroke length: 1 ... 500 mm
- Force: 19 ... 1870 N
- Double-acting and single acting
- Position sensing
- Fixed/adjustable/self-adjusting cushioning

Frequently bought together



SDBT-MSB



VFOE



PUN-H



NPQE



QS



Guided drives DFM

- Diameter 6, 10, 12, 16, 20, 25, 32, 40, 50, 63, 80, 100 mm
- Stroke length 5 ... 400 mm
- Force 51 ... 4712 N
- Position sensing
- Fixed/adjustable cushioning
- Plain-bearing guide
- Recirculating ball bearing guide
- Variants available

Frequently bought together



SDBT-MSB



VFOE



PUN-H



NPQE



QS





Mini slides DGST

- Diameter 6-25 mm
- Stroke lengths: 10-200 mm
- Force 25 ... 589 N
- Cushioning variants:
 - Basic integrated elastic cushioning without stroke adjustment
 - Elastic polymer cushioning elements with stroke adjustment

Frequently bought together



SDBT-MSB
SDBC-MSB



VFOE



PUN-H



NPQE



QS



Linear drives DGC-K

- 1:1 interchangeable with linear drive DGP
- Compact design
- No external guide, for simple drive functions
- Diameter: 18, 25, 32, 40, 50, 63, 80 mm
- Stroke length: 1 ... 8500 mm
- Force: 153 ... 3016 N
- Position sensing

Frequently bought together



SDBT-MSB



VFOE



PUN-H



NPQE



QS



Guided linear drive DGC

- Guide variants
 - Standard design
 - Plain-bearing guide
 - Recirculating ball bearing guide
- Diameter: 8, 12, 18, 25, 32, 40, 50, 63 mm
- Stroke length: 1 ... 8500 mm
- Force: 30 ... 1870 N
- Position sensing
- Various cushioning options

Frequently bought together



SDBT-MSB



VFOE



PUN-H



NPQE



QS





Parallel grippers DHPC

- Size 6, 10, 16, 20, 25, 32, 40
- Stroke length 2 ...15 mm per gripper jaw
- Force: 3.9 ...388 N per gripper jaw
- Position sensing
- NO/ NC gripping
- Standard and flat gripper finger design

Frequently bought together



QS



PUN-H



NPQE



Angular grippers DHWC

- Size 6, 10, 16, 20, 25, 32
- Opening angle : 30°
- Total gripping torque : 5.4 ...687.6 Ncm
- Position sensing
- NO gripping

Frequently bought together



SDBT-MSB



PUN-H



NPQE



VFOE



Radial grippers DHRC

- Size 6, 10, 16, 20, 25, 32
- Opening angle : 180°
- Total gripping torque : 4.8 ...725.6 Ncm
- Position sensing
- NO gripping

Frequently bought together



SDBT-MSB



PUN-H

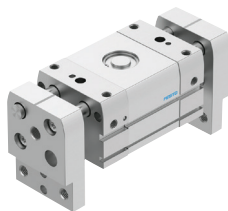


NPQE



VFOE





Long stroke parallel gripper DHPL

- Size 10, 16, 20, 25, 32, 40
- Stroke per jaw : 10, 15, 25, 30, 35, 40, 50, 60, 80, 100
- Gripping force : 21 ... 536 N
- Rack and pinion design
- Double acting with plain bearing guide

Frequently bought together



SDBT-MSB



VFOE



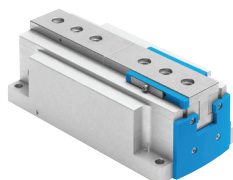
PUN-H



NPQE



QS



Flat parallel gripper HPPF

- Size 8, 12, 16, 20
- Stroke per jaw : 4, 6, 8, 10, 12, 16, 20, 24, 32, 40
- Total gripping force : 60 ... 377 N
- Positioning sensing
- Adjustable stroke

Frequently bought together



SDBT-MSB



GRLA



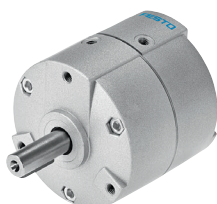
PUN-H



NPQE



VFOE



Semi-rotary drives DRVS

- Housing protected against splash water and dust
- Size 6, 8, 12, 16, 25, 32, 40 mm
- Torque 0.15 ... 20 Nm
- Swivel angle 90, 180, 270°
- Position sensing
- Fixed elastic cushioning elements on both sides

Frequently bought together



SDBT-MSB
SDBC-MSB



VFOE



PUN-H



NPQE



QS





Semi-rotary drives DGSS

- Stroke adjustment and external cushioning using accessories
- Size 6, 10, 16, 20 mm
- Stroke 5, 10, 15, 20, 25, 30, 40, 50, 60 mm
- Position sensing
- Cushioning: elastic (P), hydraulic shock absorbers

Frequently bought together



SDBT-MSB



VFOE



PUN-H



NPQE



QS



Semi-rotary drives DRRS

- Size 8, 10, 12, 16, 20, 25, 32, 40 mm
- Torque 0.29 ... 33.9 Nm
- Swivel angle 0 ... 180°
- Position sensing
- Cushioning: elastic (P), hydraulic shock absorbers
- Flanged shaft

Frequently bought together



SDBT-MSB



VFOE



PUN-H



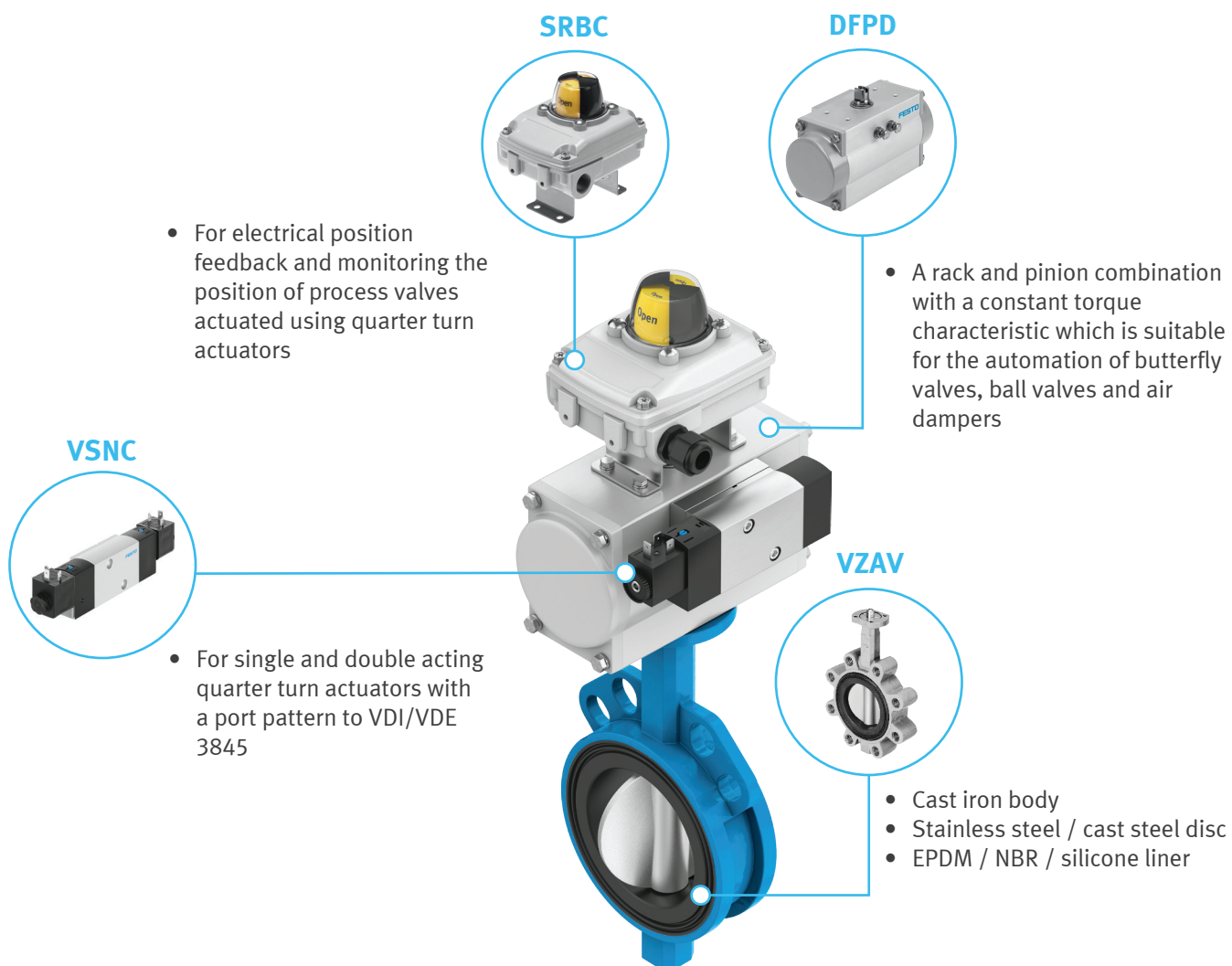
NPQE



QS



Butterfly valve unit KVZA



Used in explosive environment



Used in the production of honey



SIL certified
according IEC 61508

Quarter turn actuators DFPD

- With rack and pinion gear unit
- Size: 10 ... 2300
- Torque: 10 ... 2300 Nm
- Swivel angle: 0 ... 90°, 0 ... 180°
- Flange hole pattern to ISO 5211
- NAMUR connection pattern for solenoid valves
- Sensor boxes connection to VDI/VDE 3845
- Positioner connection to VDI/VDE 3847-2
- Up to SIL3 low demand mode
- ATEX II 2GD c105°C (T4)X

Frequently bought together



GRLA



SRBC



SRBG



VSNC



SRBI



SASF



Media separated valve VYKA

- Extremely precise, suitable for small volume dosing application
- High flow rate with compact size of 7mm width
- Easy to clean thanks to media separation
- Low media consumption thanks to small internal volume
- Suitable for aggressive media
- Low power consumption as a result of holding current reduction
- Developed according to ISO 13485
- FDA-listed materials: PEEK(Housing), FPM/FPM/EPDM(Diaphragm)
- 2/2 or 3/2-Way valve (NO/NC) available
- Flow rate Kv (with water at 1 bar): 0.35 l/min
- Operating pressure: -0.5...2 bar
- Operating voltage: 12...26 V DC

Frequently bought together

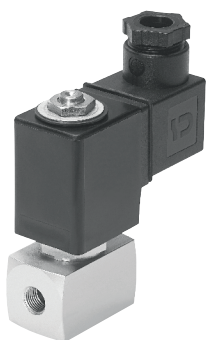


NLFA



VAEM





Solenoid valves VZWD

- 2/2 way valve
- Port: 1/8", 1/4"
- G threads or NPT threads
- Operating pressure: 0 ... 90 bar
- Nominal pressure: 40 bar
- Electrical actuation
- Voltage 24 V DC, 110 V AC, 230 V AC
- 2/2 way poppet valve (NC), directly actuated
- FPM sealing material
- Suitable for high-pressure applications with low flow rates
- Available in brass or stainless steel versions
- Medium temperature -10 ... 80°C
- Flow rate 0.06 ... 0.16 m³/h

Frequently bought together



NEBU



QS



Pinch valves VZQA

- 2/2 way function
- Normally open/closed versions
- Connection 1/4", 1/2", 1, 2"
- G or NPT thread or clamp versions available
- Pressure range 0 ... 2, 4, 6 bar
- Pneumatic actuation
- 2/2 way pinch valve
- Aluminium or stainless steel housing (Clean Design)
- Sealing material EPDM, NBR, silicone
- For controlling fluid/powder media, solids, and material mixtures up to viscosity level of 4000 mm²/s
- Suitable for use with closing application

Frequently bought together



QS



SME/T-8M



VUVG-S



PUN-H





SIL certified
according IEC 61508

Angle seat valves VZXA

- Port DN 13, 1/2"; DN20, 3/4"; DN25, 1"; DN32, 1 1/4"; DN40, 1 1/2"; DN50, 2"; DN65, 2 1/2"
- G-thread to DIN ISO 228-1 or NPT-thread to ANSI/ASME B 1.20.1 or Rc-thread to DIN 10226-2
- Medium pressure 0 ... 30 bar
- Valve function 2/2, Normally Closed, Normally Open, Double Acting
- ATEX-approval
- Use with slightly contaminated media, up to 600mm²/s viscosity
- Use for steam applications possible
- Available with 3/2 banjo valve options

Frequently bought together



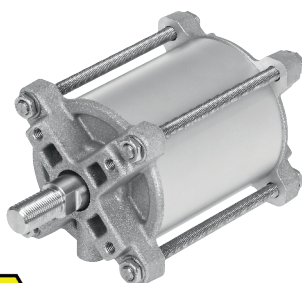
SIEN



VOFX



SMT



Linear actuators DFPC

- Optimised for process valves
- Diameter: 80, 100, 125, 160, 200, 250, 300 mm
- Stroke length: 40 ... 1600 mm
- Double-acting
- Mounting interface: ISO 5210, ISO 15552
- Option: Position sensor
- Fixed cushioning at both ends
- ATEX Declaration

Frequently bought together



SMT



GRLA

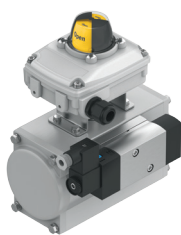


QS



NPQE





SIL certified
according IEC 61508

Actuator assembly units KDFP

- Torque range: 1 ... 3248 Nm
- Actuator type: Double acting, Single acting
- Flange size: F03 ... F16
- Shaft size: WAF8 ... WAF46
- Operating pressure: 2 ... 8 bar

Frequently bought together



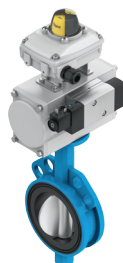
PCRP



MS4



MS4-B



SIL certified
according IEC 61508

Butterfly valve assembly units KVZA

- Connection type: Wafer, Lug
- Connection standard: PN10, PN16, ANSI #150
- Sizes: DN25, 32, 40, 50, 65, 80, 100, 125, 150, 200, 250, 300
- Disc material: Ductile iron (Polyamide coated), St. 14408, St 1.4408 (PFA coated)
- Seat material: EPDM, EPDM high temperature, NBR, PTFE/Silicone

Frequently bought together



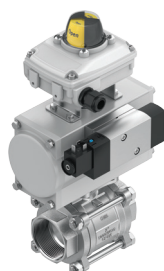
PCRP



MS4



MS4-B



SIL certified
according IEC 61508



Ball valve assembly units KVZB

- Connection type: Flange, Threaded, Clamp, Welded end
- Sizes: 1/4", 3/8", 1/2", 3/4", 1", 1-1/2", 2", 2-1/2", 3", 4", 6", 8"
- Operating pressure up to 63 bar
- Valve design: 2/2 way, 3/2 way
- Body material: Brass, Stainless steel

Frequently bought together



PCRP



MS4



MS4-B





SIL certified
according IEC 61508

Sensor boxes SRBC

- Measuring principle electromechanical magnetic reed or inductive
- Switching element function Toggle switch, single-pole (SPDT)
- For DC and AC
- Pre-fitted mounting bridge
- Cable connector and blanking plug included in the scope of delivery
- IP67, NEMA 4/4X protection
- ATEX II 2GD: Ex-ia-NAMUR version
- SIL2 according to IEC61508

Frequently bought together



DFPD



Positioners CMSX



- Positioner for double/single-acting quarter-turn actuator or linear
- Namur connection interface (VDI/VDE 3845)
- Configurable characteristic curves: Linear/Equal percentage/User free
- Polycarbonate housing
- Configurable set-point signal 0-10V/0-20mA/4-20mA
- 24VDC operating voltage
- IP65 protection
- Analogue feedback signal 4-20mA
- Configurable emergency input signal: Open/Close/Hold
- Pressure range 3-8 bar
- Operating temperature -5 ... 60°C
- Rotation angle 0 ... 110°
- Repetition accuracy $\pm 1\%$

Frequently bought together



QS





SIL certified
according IEC 61508

Positioners CSMH

- Intelligent positioner for double/single-acting quarter-turn actuator or linear
- Namur connection interface (VDI/VDE 3845-1 or VDI/VDE 3847-2)
- HART interface
- 4-20mA loop-powered, 2-wire
- Aluminium, powder-coated housing
- IP66, IP67 protection
- Swapable manifold block for double/single acting function
- Self monitoring and diagnostics option
- Partial-stroke test
- Option for pressure gauge connection
- Pressure range 1.4-8 bar
- Operating temperature -40 ... 80°C
- Rotation angle 0 ... 115°

Frequently bought together



QS



PCR P



Linear positioning actuator DFPI

- Integrated displacement encoder
- Integrated positioning controller (option: external positioner)
- Mounting interface: ISO 15552
- Control signal: 4-20mA
- Actuator diameter: 100...320 mm
- Stroke length: 40...990 mm
- IP65, IP67, IP69K
- Explosion proof protection: up to ATEX II 2GD

Frequently bought together



CMSX



CSMH



Process



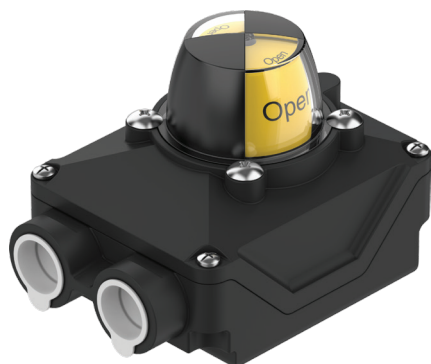
Stainless steel filter regulators PCR P

- Robust housing for the specific requirements of the PA industry
- Suitable for use outdoors and at temperatures down to - 60°
- Resistant to UV radiation and corrosive environments
- Port G 1/8, G 1/4, NPT 1/4, NPT 1/2
- Pressure 0.5 ... 7 bar, 0.5 ... 12 bar
- Flow rate 1600 ... 6440 L/min
- Manual or auto drain
- Stainless steel filter cartridge

Frequently bought together



QS



SIL certified
according IEC 61508

Sensor boxes SRBK

- Polymer limit switch box
- Switch types: mechanical, inductive and magnetic reed switches
- IP66, IP67, NEMA 4/4x protection
- Up to SIL 2 according to IEC 61508
- Ambient temperature -20 ... 70°C



Frequently bought together



DFPD



Media separated solenoid valve VYKC

- Extremely precise, suitable for small volume dosing application
- High flow rate with body size of 16mm width
- Easy to clean thanks to media separation
- Low media consumption thanks to small internal volume
- Suitable for aggressive media
- Low power consumption as a result of holding current reduction
- FDA-listed materials: PEEK(Housing), EPDM(Diaphragm)
- 2/2 or 3/2-Way valve (NO/NC) available
- Reversible flow possible
- Flow rate Kv (with water at 1 bar): 0.8 l/min
- Operating pressure: -0.75...3 bar
- Operating voltage: 12...24 V DC

Frequently bought together



VAEM

NLFA



Media separated solenoid valve VYKB

- Extremely precise, suitable for small volume dosing application
- High flow rate with body size of 10 or 12mm width
- Easy to clean thanks to media separation
- Low media consumption thanks to small internal volume
- Suitable for aggressive media
- Low power consumption as a result of holding current reduction
- 2/2 or 3/2-Way valve (NO/NC) available
- Flow rate Kv (with water at 1 bar): 0.93 l/min
- Operating pressure: -0.75...4.5 bar
- Operating voltage: 12...24 V DC

Frequently bought together



NLFA

VAEM



Pressure sensors SPAN

QS



SASC



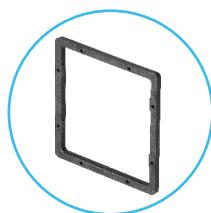
NEBU



NEBS



- Easy installation by quick connector and L1 plug connector or M8 electrical adapters.



SMAH

- Front panel + wall mounting kit.



IO-Link

SPAN

- Compact design 30x30mm with IP40 protection.
- 13 pressure measuring ranges (with vacuum).
- Various switching functions.
- Digital (PNP/NPN, NO/NC) or Analogue outputs (0...10V, 4...20mA).
- Serial communication integrated using IO-Link 1.1.



SACC

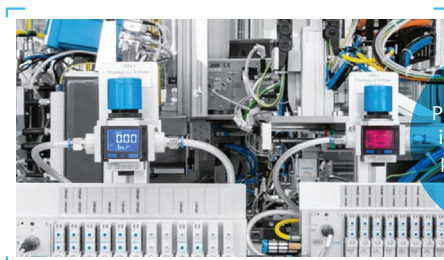
- Safety guard.



NEW

SPAN-B

- Best fit for basic application.
- Compact design 30 x 30 mm with IP40.
- 3 pressure measuring ranges -1 to 10 bar.
- 1 switchable digital electrical output, PNP/NPN, NO/NC.
- Cu, ZN, Ni-free.



Precise pressure is monitored in production line



Cylinder switches SDBT-MSB / SDBC-MSB

- Basic cylinder switches with solid-state technology
- Best fit for basic application
- For T slot & C slot pneumatic actuator
- Switching outputs PNP, NPN and NO option available

Frequently bought together



NEBA



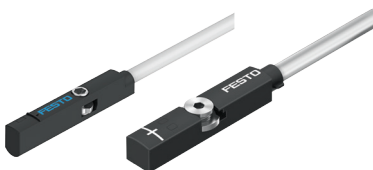
Cylinder switch SDBT-MSX

- The programmable proximity switch with auto teach-in
- Capacitive teach button
- Automatic switching point detection
- Easier and faster installation, no precision adjustment needed.
- For T-Slot pneumatic actuator
- Programmable switching output PNP, NPN and NO, NC
- IP65/68
- Electrical connection M8 or Open end
- 10.....30V DC

Frequently bought together



NEBA



Cylinder switches SMT-8M, SMT-10M

- Cylinder switches with solid-state technology
- For T slot & C slot pneumatic actuator
- Switching outputs PNP, NPN and NO, NC option available
- Electrical connection M8, M12, open end cable
- 5 ... 30 V DC

Frequently bought together



NEBA





Position sensors SRBS

- For semi-rotary drives DRVS 6 ... 40 and DSM 8, 10, 12
- Switching outputs PNP, NPN and NO, NC freely programmable
- Electrical connection: M8
- Sensing range: 0 ... 270°
- Speed up to 1.2m/s
- Optional: Electric ball screw cylinder with clean design (food application)

Frequently bought together



NEBA



DRVS



Pressure sensors SPAN-B

- Best fit for basic application
- Compact 30 x 30 mm design
- Blue display with white writing, changeable to red display colour
- 3 pressure measuring range from -1 to 10 bar
- 1 switchable digital electrical output, PNP/NPN, NO/NC
- Intuitive menu navigation
- Pneumatic connection: G1/8, R1/8, M5, push-in connector 4mm
- Protection class IP40
- Cu, Zn, Ni-free
- Optional with electrical connection M8 cable

Frequently bought together



NEBA



NEBS





 **IO-Link**

Pressure sensors SPAN

- Compact design 30 x 30 mm
- High-contrast display with blue backlighting
- 13 Pressure measuring range from -1 to 16 bar
- Voltage 20 ...30 V DC
- 2 Switching output PNP / NPN , NO/NC selectable
- Electrical output 0.1 ... 10 V, 1 ... 5 V, 4 ... 20 mA
- Pneumatic connection G1/8, R1/8, NPT1/8, M5, push-in connector 4 mm,
- Pressure/vacuum switches

Frequently bought together



NEBA



Pressure sensors SDE5

- Pressure measuring range -1 ... 10 bar
- Voltage 15 ... 30 V DC
- PNP/NPN digital output and 0...10V analogue output available
- Pressure/vacuum switches
- Switch status display by a visible LED
- Freely programmable

Frequently bought together



NEBA





IO-Link

Flow sensors SFAH

- ECO function with option to switch off the display
- Serial communication integrated using IO-Link® 1.1
- Flow measuring ranges:
 - 0.002 ... 0.1 l/min
 - 0.01 ... 0.5 l/min
 - 0.02 ... 1 l/min
 - 0.1 ... 5 l/min
 - 0.2 ... 10 l/min
 - 1 ... 50 l/min
 - 2 ... 100 l/min
 - 4 ... 200 l/min
- Switching output:
 - NPN
 - PNP
 - IO-Link®
- Analogue output:
 - 0 .. 10V
 - 1 ... 5V
 - 4 ... 20mA

Frequently bought together



PUN-H



NEBU



QS



NPQE



IO-Link

Flow sensors SFAM

- Sensor identification, diagnostics and teach-in possible via IO-Link®
- Flow measuring ranges
 - 1000, 3000, 5000, 10000, 15000 l/min
- Switching output
 - NPN
 - PNP
 - IO-Link®
- Analogue output
 - 0 .. 10V
 - 4 ... 20mA

Frequently bought together



NEBA



Polyurethane tubings PUN-H

- Easy installation with “one-click” principle
- Hydrolysis-resistant and suitable for water applications
- Suitable for use in clean rooms, FDA compliant and corrosion-resistant



Flexible and durable use in control cabinet



Used in process industry in harsh environment



Air preparation MS2-B

- Regulator, filter regulator
- Connection: QS6, M5
- Flow rate: 140 ... 350 l/min
- Pressure range: 0.5... 7 bar
- Temperature range: -5... +50°C
- Filtration grade: 5 µm

Frequently bought together



QS



PUN-H



NPQE



Air preparation MS4-B

- Regulator, filter regulator, manual on/off valve, electrical on/off valve
- Connection: G1/4
- Flow rate: 1200 ... 1400 l/min
- Pressure range: 0.5 ... 10 bar
- Temperature range: -5 ... +50°C

Frequently bought together



QS



PUN-H



NPQE



Air preparation MS6-B

- Regulator, filter regulator, manual on/off valve, electrical on/off valve
- Connection: G1/2
- Flow rate: 1500 ... 5800 l/min
- Pressure range: 0.5 ... 10 bar
- Temperature range: -5 ... +50°C
- Filtration grade: 5, 40 µm

Frequently bought together



QS



PUN-H



NPQE





Air preparation MS4/6

- Port: G1/8, G1/4, G3/8, G1/2
- Proof pressure: 20 bar
- Pressure: 0.3 ... 7 bar, 0.3 ... 4 bar, 0.5 ... 12 bar, 0.5 ... 16 bar
- Filtration: 5 and 40 µm
- Flow rate: 850 ... 7,200 l/min
- Plastic or metal bowl option
- Manual or Auto drain option

Frequently bought together



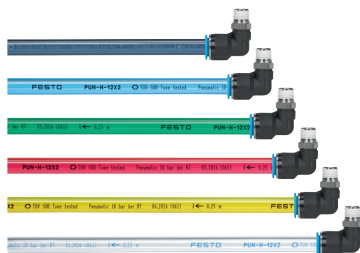
QS



PUN-H



NPQE



Polyurethane tubings PUN-H

- Large selection of variants
- Highly resistant to stress cracks, microbes and hydrolysis
- Outside diameter: 3 ... 16 mm
- Internal diameter: 2.1 ... 11 mm
- Temperature-dependent operating pressure: -0.95 ... 10 bar
- Ambient temperature: -35 ... 60° C
- Operating medium:
 - Compressed air
 - Vacuum
 - Water

Frequently bought together



QS



NPQE





Push-in fittings NPQE

- Wide designs & variations
- Standard thread : M3, M5, M7, R1/8, R1/4, R3/8, R1/2
- OD Tubing: 3, 4, 6, 8, 10, 12, 14, 16 mm
- Threaded connection: R thread

Frequently bought together



PUN-H



Push-in fittings NPQR

- Stainless steel fitting for use in areas subject to intensive cleaning.
- High corrosion and chemical resistance
- Very good temperature resistance
- Operating medium: compressed air, vacuum, water
- Standard thread : M5, M7, G1/8, G1/4, G3/8, G1/2
- OD Tubing: 4, 6, 8, 10, 12, 14, 16 mm

Frequently bought together



PUN-H



Push-in fittings QS

- Wide designs & variations
- Mini-series port: M3, M5, M7, M 6x0.75, M 8x0.75, R1/8, G1/8
- Standard-series port: R1/8, R1/4, R1/2, R3/8, G1/8, G1/4, G1/2, G3/8, G3/4
- OD Tubing: 2, 3, 4, 6, 8, 10, 12, 16, 22 mm
- Threaded connection: R, G
- Suitable for vacuum

Frequently bought together



PUN-H





Flow control valves VFOE

- Connection : M5, M7, R1/8, R1/4, R 3/8, R 1/2, G 1/8, G 1/4, G 3/8, G 1/2
- Plug connector 4, 6, 8, 10, 12 mm
- Flow rate 0 ... 1300 l/min
- Non-return, throttle in and throttle out function

Frequently bought together



PUN-H



Flow control valves GRLA/Z-D

- Connection: M3, M5, G 1/8, G 1/4, G 3/8, G 1/2, also available with NPT thread
- Plug connector: 3, 4, 6, 8, 10, 12 mm
- Flow rate: 0 ... 1,400 l/min
- Non-return and flow control valve

Frequently bought together



PUN-H



Pilot check valves HGL

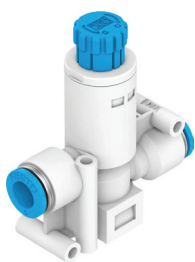
- Manually actuated venting with separate accessories possible
- Port: M5, G1/8, G1/4, G3/8, G1/2
- Flow rate: 130 ... 1600 l/min
- Shut-off valve
- Pneumatic piloted non-return valve

Frequently bought together



PUN-H





Pressure regulator VRPA

- In line with /without pressure gauge
- L-shape with pressure gauge
- Connection: QS4, QS6, QS8, M5, R1/4, R1/2
- Flow rate: 80 ... 130 l/min
- Pressure range: 1 ... 8 bar

Frequently bought together



PUN-H



Silencers U

- Threaded connection: M5, G1/2, G1/4, G1/8, G3/8, G3/4, G1
- Barbed connector connection: PK-3, PK-4
- Noise level: 65 ... 84 dB(A)



Silencers AMTE

- High-temperature resistance up to 80°C
- Metal variant
- Connecting threads M3, M5, G1/8, G1/4, G3/8, G1/2, G3/4, G1,
- Sound pressure level 71 ... 95 dB(A)





Suction cups VAS

- Suction cup size diameter 1 to 125 mm
- Connection:
 - Male thread
- Round suction cup:
 - Standard
 - Bellows, 1.5 convolutions

Frequently bought together



OVEM

OVEL

VN



Pressure vacuum generator PGVA

- Integrated compressor
- Proportional pressure and vacuum regulation
- 24V DC powered
- Operating pressure: -0.62....0.8 Bar
- Communication: RS232 / RJ45 Modbus TCP
- Integrated 0.01um air filter



Frequently bought together



DHOE

PUN-H







Australia
Head Office
Melbourne
Festo Pty. Ltd
179-187 Browns Road
P.O. Box 261
Noble Park North VIC 3174
☎ +61 1300 88 96 96
✉ info_au@festo.com

Indonesia
Head Office
PT. Festo
Jl. Tekno V Blok A/ 1 Sektor XI
Kawasan Industri BSD
Serpong Tangerang 15314
Banten Indonesia
☎ +62 804 1 2 33786
✉ sales_id@festo.com

Malaysia
Head Office
Festo Sdn Bhd
14A, Jalan Teknologi
Taman Sains Selangor 1
Kota Damansara
47810 Petaling Jaya
Selangor
☎ +60 3 6144 1122
✉ csc_my@festo.com
Branch Offices:
Penang

New Zealand
Head Office
Festo Ltd
86 Highbrook drive
East Tamaki 2013
Auckland
☎ +64 (0)9 574 1094
✉ info_nz@festo.com

Philippines
Head Office
Festo Inc.
KM 18, West Service Road
South Superhighway
1700 Paranaque City
Metro Manila
☎ +63 1800 10 12 33786
✉ festo_ph@festo.com

Singapore
Head Office
Festo Pte. Ltd.
6 Kian Teck Way
Singapore 628754
☎ +65 6285 8585
✉ sales.sg@festo.com

Thailand
Head Office
Festo Ltd.
202 Kanchanapisek Road
Ramintra Khannayao
Bangkok 10230, Thailand
☎ +66 1 800 019 051
✉ sales_th@festo.co

Vietnam
Head Office
Festo Co., Ltd
Floor 2, HQ Tower, No. 9,
Tran Nao Street, Quarter 3
An Khanh Ward, Thu Duc City,
Ho Chi Minh City, Viet Nam
☎ +84 28 3514 5600
✉ sales_vn@festo.com
Branch Office:
Hanoi

Connect with Us



Festo Southeast
Asia and Pacific