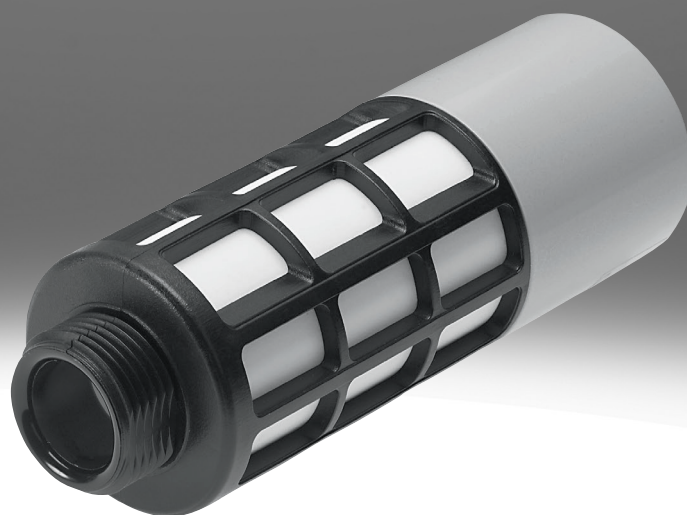


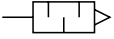
## Silencer UOS-1

**FESTO**



## Characteristics

### At a glance



To reduce noise and prevent contamination at the exhaust ports of pneumatic components.

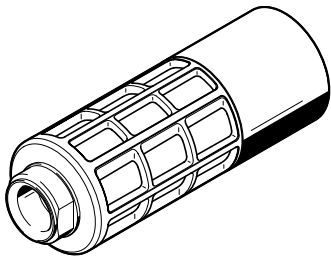
- Open silencer for MS6-SV, MS series (order code in modular product system: SO)
- Operating medium: compressed air

Note: Clean silencers with paraffin (not with petrol or trichloroethylene).

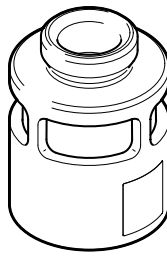
### Flow rate characteristic

[ ] None

[LF] Low flow



For high exhaust rate



For low exhaust rate

Note: The compact silencer UOS-1-LF may only be used for applications with lower exhaust rates. Pneumatic port 2 at the soft-start/quick exhaust valve MS6-SV-D/E must be reduced to G1/4 by a connecting plate MS6-AGB.

Type code

001	Series	
UOS	Silencer	
002	Pneumatic connection	
1	G1	

003	Flow rate characteristic	
	None	
LF	Low flow	

## Datasheet

### General technical data

Pneumatic connection	G1
Design	Open silencer
Type of mounting	Via male thread
Mounting position	optional
Type of seal on screwed plug	No seal

### Operating and environmental conditions

Operating pressure	0 ... 1 MPa
Operating pressure	0 ... 10 bar
Operating pressure	0 ... 145 psi
Operating medium	Compressed air to ISO 8573-1:2010 [:-:-]
Ambient temperature	-10 ... 50°C
Corrosion resistance class CRC <sup>1)</sup>	2 - Moderate corrosion stress

1) More information: [www.festo.com/x/topic/crc](http://www.festo.com/x/topic/crc)

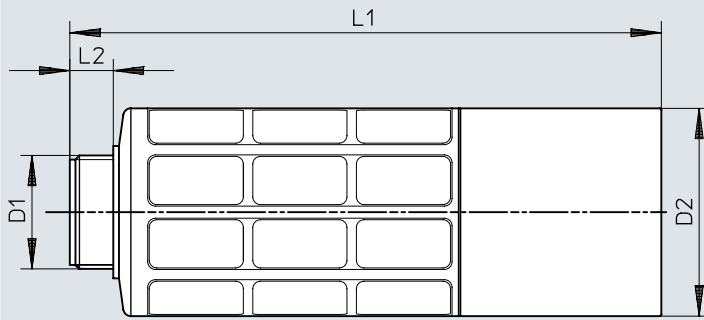
### Materials

Short type code	UOS-1-LF	USO-1
Material housing	Wrought aluminium alloy	POM
Material sleeve	–	Wrought aluminium alloy
Material shock absorber insert	PE	
Note on materials	RoHS-compliant	
LABS (PWIS) conformity	VDMA24364-B1/B2-L	

## Dimensions

### Dimensions – Dimensions UOS-1

Download CAD data → [www.festo.com](http://www.festo.com)



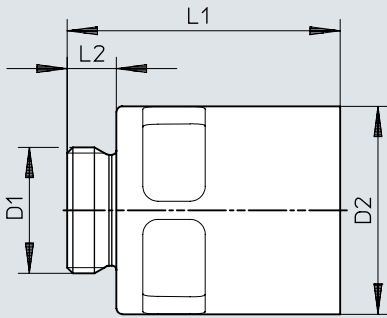
[1] Barbed connector for tubing, inside- $\varnothing$  3

		D1	D2 $\varnothing$	L1	L2
UOS-1	MS6-SV-D/E	G1	55	156,5	11,5

## Dimensions

### Dimensions – UOS-1-LF

Download CAD data → [www.festo.com](http://www.festo.com)




[1] Barbed connector for tubing, inside- $\varnothing$  4


		D1	D2 $\varnothing$	L1	L2
UOS-1-LF	MS6-SV-D/E	G1	55	72,2	13

## Ordering data

## Ordering data – Version for high exhaust capacity

	Pneumatic connection	Sound pressure level	Product weight	Part no.	Type
	G1	75 dB(A)	200 g	<b>552252</b>	<b>UOS-1</b>

## Ordering data – Version for low exhaust capacity

	Pneumatic connection	Sound pressure level	Product weight	Part no.	Type
	G1	75 dB(A)	157.9 g	<b>1901207</b>	<b>UOS-1-LF</b>