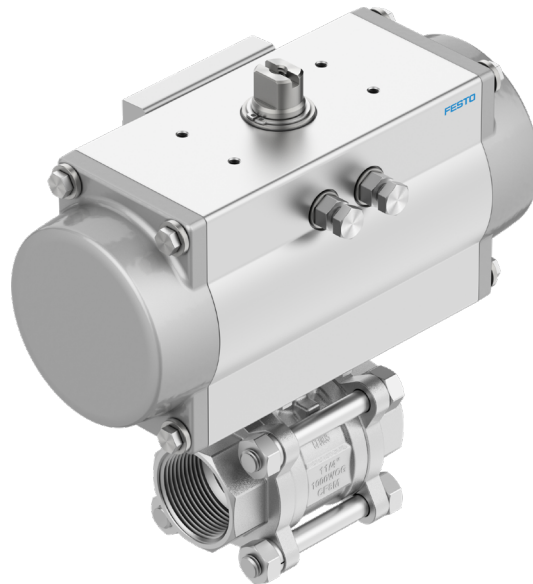


2-Way NPT Ball Valve Assembly VZBE-A

Stainless Steel Valve Preassembled with Pneumatic Actuator

FESTO



Ready-to-Install

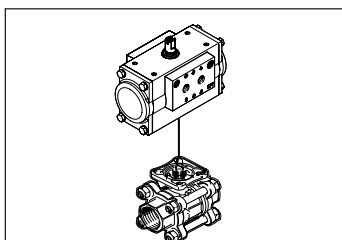
Highlights

- One part number simplifies ordering and logistics
- Faster delivery
- No assembly required
- 3-piece valve design allows for easy repair and cleaning after installation
- Simple addition of accessories due to standard interfaces

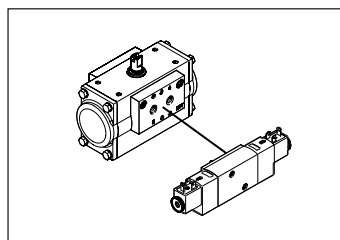
This unbeatable package is both economical and a time saver. Festo has matched torques, mounting patterns and hardware so you don't have to. This reduces the time required for valve selection, calculation and sizing of the actuator and design of assembly hardware. It simplifies your logistics and procurement and ensures a working solution everytime.

Features

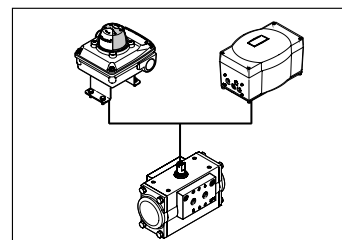
- High flow full port valve
- Simple pneumatic actuation
- Dual piston rack and pinion quarter turn actuator
- Double acting and spring return actuators (fail closed and fail open options)
- ISO/Namur/VDI/VDE interfaces for accessories
- Suitable for outdoor, hazardous location and certain washdown environments
- Suitable for range of fluids and inert gases



Ball valve (VZBE) and actuator (DFPD) preassembled



Optional accessories
NAMUR valves: VSNC



Optional accessories
Sensor boxes: SRBC/E/G
Positioner: CMSX

2-Way NPT Ball Valve Assembly VZBE-A

Stainless Steel Valve Preassembled with Pneumatic Actuator

General Technical Data											
Ball Valve connection [inch]	1/4"	3/8"	1/2"	3/4"	1"	1 1/4"	1 1/2"	2"	2 1/2"	3"	4"
Valve Function/Construction	2-way, 3-piece ball valve with ISO5211 mounting pad for direct mount										
Valve Material	316 Stainless steel body, ball, and stem, PTFE Seat, PTFE Seals										
Valve Connections	NPT (according to ANSI B1.20.1)										
Media Type	Water, Oil, Gas, Any fluid media that is non-abrasive or non-corrosive to the valve materials										
Media Pressure	High vacuum up to 1000 psi										
Media Temperature	-4°F to 300°F (-20°C to 150°C)*										
Actuator Type	DFPD, quarter-turn pneumatic actuator. Meets ISO5211, NAMUR, and VDI/VDE 3845 standards										
Nominal Supply Pressure	80 psi (5.5 bar)										
Actuator Sizes (Double Acting)	DFPD-10			DFPD-20		DFPD-40		DFPD-80	DFPD-120	DFPD-160	DFPD-240
Actuator Sizes (Spring Return)	DFPD-20			DFPD-40	DFPD-80		DFPD-120	DFPD-240	DFPD-300	DFPD-480	

* Valves can handles up to 392°F (200°C), but for temperatures exceeding 300°F (150°C), a DFPD actuator with Viton seals is recommended

The highlighted actuators are going up in size (2.5" - 4").

Size [inch]	Double Acting Assembly			
	Old Part Number	Old Type Code	New Part Number	New Type Code
1/4"	23592377	VZBE-1/4-DFPD-10-DA-CS	8191895	VZBE-A-1/4-T-63-T-2-F0304-V15V15-PA10
3/8"	23475977	VZBE-3/8-DFPD-10-DA-CS	8191896	VZBE-A-3/8-T-63-T-2-F0304-V15V15-PA10
1/2"	23523802	VZBE-1/2-DFPD-10-DA-CS	8191897	VZBE-A-1/2-T-63-T-2-F0304-V15V15-PA10
3/4"	23448625	VZBE-3/4-DFPD-20-DA-CS	8191898	VZBE-A-3/4-T-63-T-2-F0304-V15V15-PA20
1"	23487481	VZBE-1-DFPD-20-DA-CS	8191899	VZBE-A-1-T-63-T-2-F0405-V15V15-PA20
1 1/4"	23592387	VZBE-11/4-DFPD-40-DA-CS	8191900	VZBE-A-11/4-T-63-T-2-F0405-V15V15-PA40
1 1/2"	23592388	VZBE-11/2-DFPD-40-DA-CS	8191901	VZBE-A-11/2-T-63-T-2-F0507-V15V15-PA40
2"	23449247	VZBE-2-DFPD-80-DA-CS	8191902	VZBE-A-2-T-63-T-2-F0507-V15V15-PA80
2 1/2"	23592389	VZBE-21/2-DFPD-80-DA-CS	8191903	VZBE-A-21/2-T-63-T-2-F0710-V15V16-PA120
3"	23592390	VZBE-3-DFPD-120-DA-CS	8191904	VZBE-A-3-T-63-T-2-F0710-V15V16-PA160
4"	23592391	VZBE-4-DFPD-160-DA-CS	8191905	VZBE-A-4-T-63-T-2-F1012-V15V16-PA240

All assemblies are sized for nominal pilot pressure of 80 psi (5.5 bar)

Size [inch]	Spring Return Assemblies (Fail Closed)			
	Old Part Number	Old Type Code	New Part Number	New Type Code
1/4"	23592385	VZBE-1/4-DFPD-20-FC-CS	8191906	VZBE-A-1/4-T-63-T-2-F0304-V15V15-PB20
3/8"	23523420	VZBE-3/8-DFPD-20-FC-CS	8191907	VZBE-A-3/8-T-63-T-2-F0304-V15V15-PB20
1/2"	23439719	VZBE-1/2-DFPD-20-FC-CS	8191908	VZBE-A-1/2-T-63-T-2-F0304-V15V15-PB20
3/4"	23449253	VZBE-3/4-DFPD-40-FC-CS	8191909	VZBE-A-3/4-T-63-T-2-F0304-V15V15-PB40
1"	23440994	VZBE-1-DFPD-80-FC-CS	8191910	VZBE-A-1-T-63-T-2-F0405-V15V15-PB80
1 1/4"	23509037	VZBE-11/4-DFPD-80-FC-CS	8191911	VZBE-A-11/4-T-63-T-2-F0405-V15V15-PB80
1 1/2"	23508126	VZBE-11/2-DFPD-80-FC-CS	8191912	VZBE-A-11/2-T-63-T-2-F0507-V15V15-PB80
2"	23440979	VZBE-2-DFPD-120-FC-CS	8191913	VZBE-A-2-T-63-T-2-F0507-V15V15-PB120
2 1/2"	23592392	VZBE-21/2-DFPD-160-FC-CS	8191914	VZBE-A-21/2-T-63-T-2-F0710-V15V16-PB240
3"	23593628	VZBE-3-DFPD-240-FC-CS	8191915	VZBE-A-3-T-63-T-2-F0710-V15V16-PB300
4"	23592394	VZBE-4-DFPD-300-FC-CS	8191916	VZBE-A-4-T-63-T-2-F1012-V15V16-PB480

All assemblies are sized for nominal pilot pressure of 80 psi (5.5 bar)

Common Accessories		
Part Number	Type Code	Description
577262	VSNC-FC-M52-MD-N14-F8	Single solenoid, Namur valve (no coil)
8030802	VACF-B-B2-1	24VDC for VSNC valve
8030806	VACF-B-B2-16B	120VAC Coil for VSNC vavle
34431	MSSD-F	Plug socket for VSNC coils
3482805	SRBC-CA3-YR90-MW-22A-1W-C2P20	General purpose sensor box

For variants or additional assembly options, please contact Festo

Festo Corporation

1377 Motor Parkway
Suite 310
Islandia, NY 11749

www.festo.us