

Servo Drives CMMT and Motors EMMT

FESTO

Multi-protocol fieldbus

- Easily select the fieldbus during commissioning

EtherNet/IP™

PROFI
NET

EtherCAT®

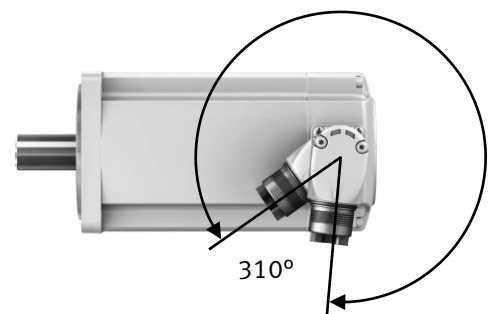
Modbus

Integrated web server

- Access drive status and diagnostics
- Upload and download parameters and firmware for easy drive duplication

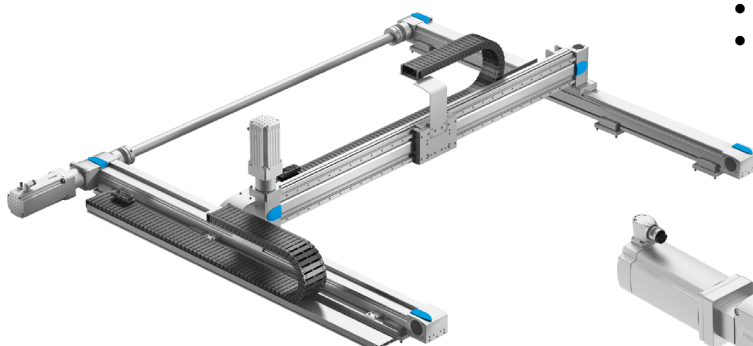
One cable plug (OCP)

- Robust quarter-turn connector with IP65 protection
- Orient the connector up to 310°



Easy integration with Festo actuators and handling systems

- Axial kits → Simple and low cost
- Parallel kits → Space-saving

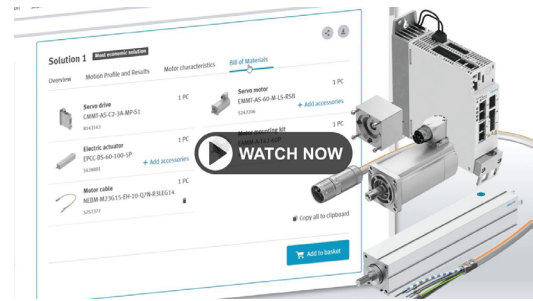


Servo axis sizing

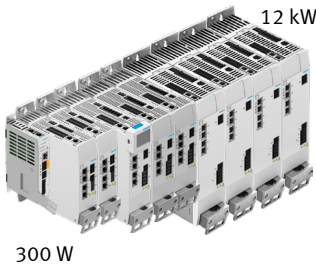
Electric Motion Sizing (EMS) is the Festo online sizing tool for selecting and ordering linear and rotary servo axes

- Easily build your Bill of Materials (BOM)
- Order the servo drive, motor, cable, actuator, motor mounting kit, and other accessories from local stock
- Download the commissioning file for fast drive configuration

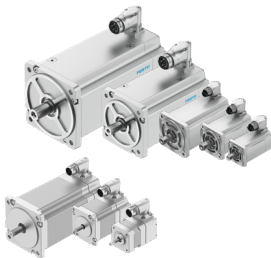
www.festo.com/EMS



Electric Motion Sizing (EMS) promotional video
@FestoNorthAmerica YouTube channel



	CMMT-AS and EMMT-AS	CMMT-ST and EMMT-ST
Description	AC servo drives and motors	DC servo drives and stepper motors with encoder feedback
Supply voltage	Single-phase: 100...230 V AC Three-phase: 200...480 V AC	24...48 V DC
Safety	STO, SBC, SS1	STO, SS1
Fieldbus	EtherNet/IP, EtherCAT, PROFINET, Modbus TCP	
Function blocks	Easy programming with Rockwell, Siemens, Beckhoff, Omron, and other PLCs	
Commissioning	Festo Automation Suite	



Motors EMMT

- Absolute encoder options
- Single-turn encoders for low-cost solutions
- Battery-free, multi-turn encoders for easy startup
- Optional integrated holding brake
- Fast delivery from local stock



Standard motor cables

- Motor, encoder, and brake signals in a single cable
- Standard lengths: 2.5 / 5 / 7.5 / 10 / 15 / 20 m
- Fast delivery from local stock
- Custom cable lengths available MTO from 0.5 ... 99.9 m



Extension motor cables

- Easily separate the motor from the control cabinet
- Great for use in energy chains
- Use in combination with cabinet flange NEAM-MF
- EMMT-AS motors → Part # 8190874 NEBM-M23/M40
- EMMT-ST motors → Part # 8181663 NEBM-LX/M17
- Made-to-order with typical delivery in 4 weeks



Order your
CMMT-ST
Starter Kit
today!

