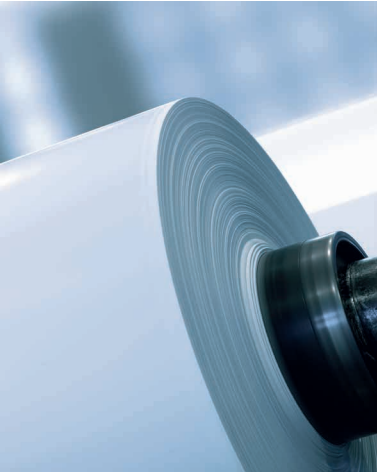


Industries...



Paper



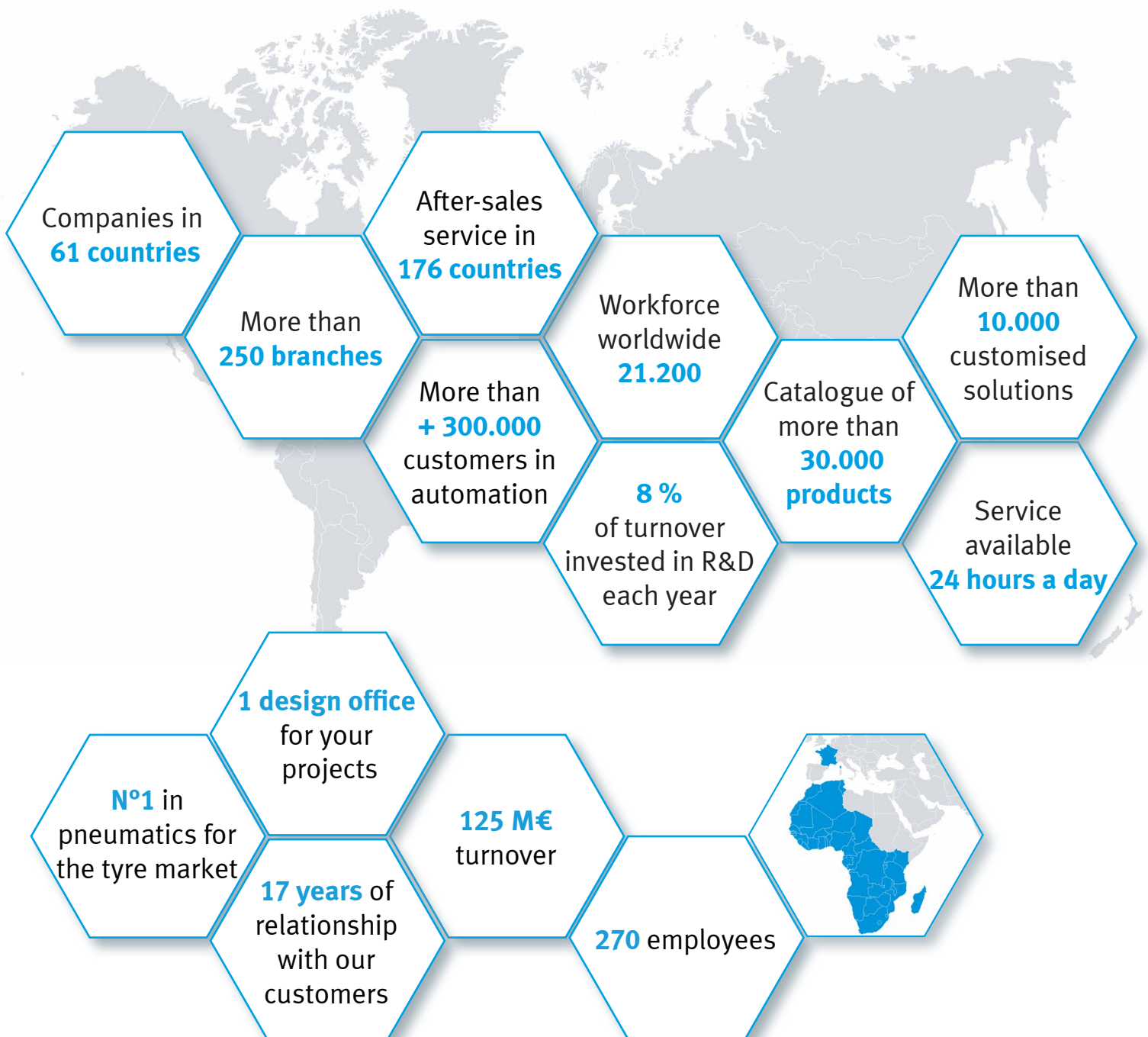
Food processing and packaging

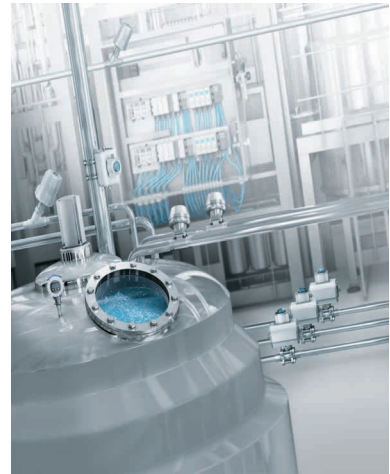


Water technology



Electronics





Biotech/Pharma and cosmetics



Automobile/Batteries

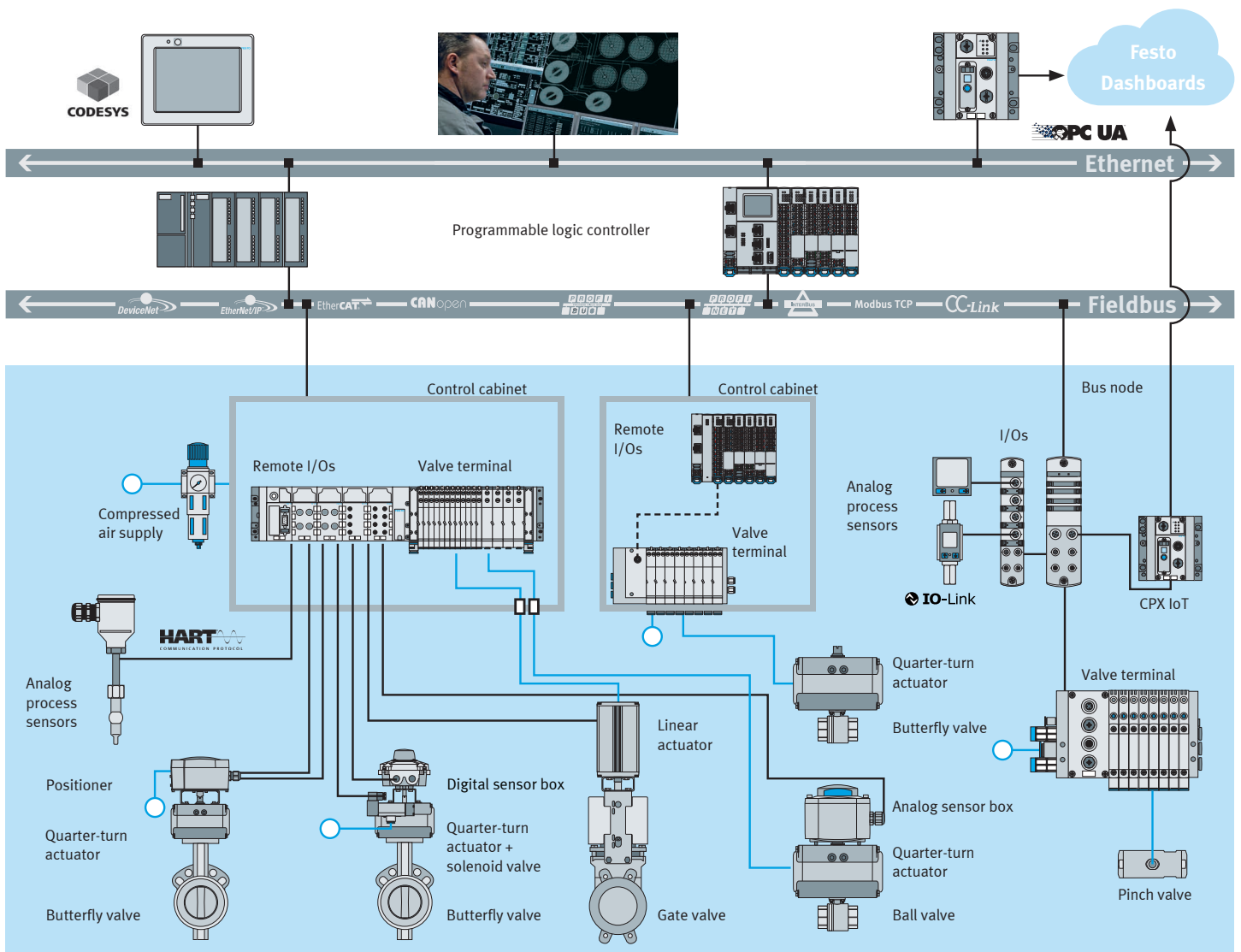


Chemicals



Oil & Gas

Giving you a head start: Complete automation systems from a single source...



Configurator for process valve units

Whether manually operated or fully automated valves, our new configurators allow you to choose the optimal solution for your applications. Select the key parameters for your application and you will see the first set of suggestions for your solution straight away. Your engineering process is faster, easier, and more reliable.

Easy and intuitive

Using simple questions (DN, fluid type, position return, etc.) our configurators guide you through the configuration process. 3D plans are automatically generated and available from the configuration. You save on time and engineering costs.

Many variants

Choice of materials, type of range, the mode of actuation, accessories, our configurators allow you to find the right model of assembled valve for your application. The generated article codes can be used for repurchasing an identical valve.

Availability

In connection with our website, our configurators allow you to configure and order your process valves on measurement at any time, in a few clicks. You significantly save time on your production schedule.

Components 100% compatible

Configurator for Butterfly Valve KVZA

Fast, simple and reliable: size and control your butterfly valves now.



3D plans available from the moment of configuration

Configuration in a few clicks



Manual



Valve assembly with pneumatic control and position feedback



Valve assembly with positioner

Accessible 24/7

Configurator for Ball Valve KVZB

Fast, simple and reliable: Order your ball valves



Manual



Valve assembly with
pneumatic control and
position feedback

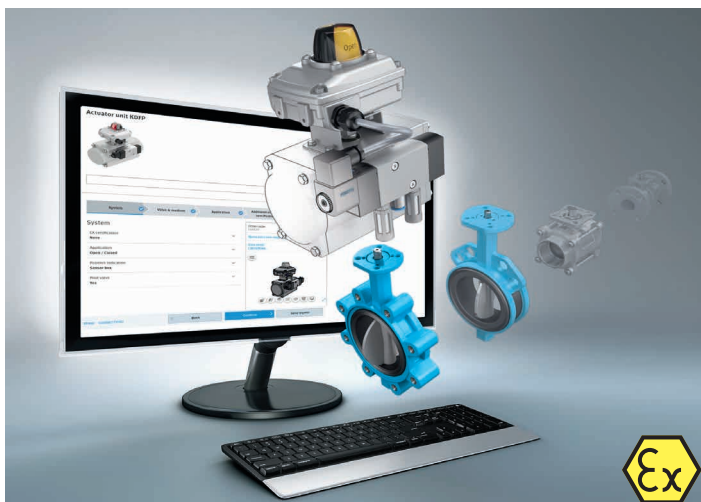


Valve assembly with
positioner

→ www.festo.com/kvzb

Configurator for Quarter Turn Actuator KDFP

Do you want to automate your valves? Festo brings you the actuator equipped with its accessories, not to mention the adapter suitable for your assembly.



Actuator assembly with
pneumatic control and
position feedback



Actuator assembly with
positioner

→ www.festo.com/kdfp

Ball valves or butterfly valves assembly

Whether it's pre-assembled valves or equipment to be mounted on your valve, Festo offers you a catalog of 100% compatible components and solutions from a single supplier. You save money and greatly simplify the planning, procurement, and commissioning.

Positioner CMSX

- Excellent cost/performance ratio
- Energy efficient
- Position feedback 4-20 mA as standard
- Pre- defined safety position for emergency shutdown



➔ More details on page 12

Quarter-turn actuator DFPD

- Compact
- Single or double acting version
- Adjustable stop at the beginning and end of the stroke
- Modular spring configuration (simple conversion)



➔ More details on page 8

Stainless steel ball valves

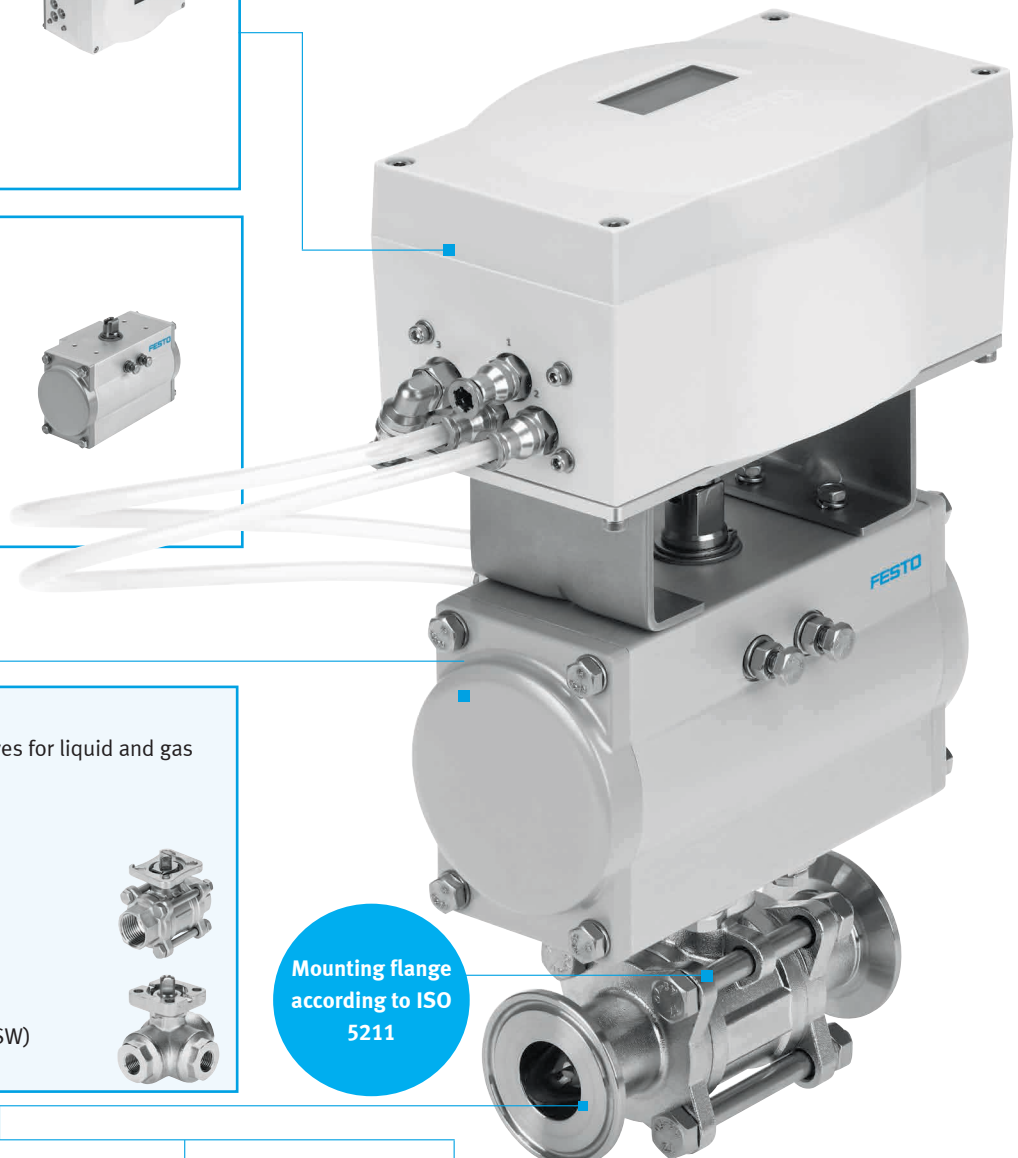
A wide range of 2-way and 3-way ball valves for liquid and gas control.

VZBA/VZBE

- 2-way / 3-way (L or T)
- Stainless steel body and ball
- PTFE seals
- VZBA: Rp thread/butt welding (BW)
- VZBE: NPT thread/ socket welding (SW)



Mounting flange according to ISO 5211



Brass: VZBM



- 2-way / 3-way (L or T)
- Body and brass ball
- Rp thread connection

Bride class 150: VZBF



- Stainless steel body and ball
- Fire safe according to API 607
- Antistatic design
- ANSI B16.5 class 150 flange

Compact flange: VZBC



- Stainless steel body and ball
- Compact design
- EN 1092-1 Flange

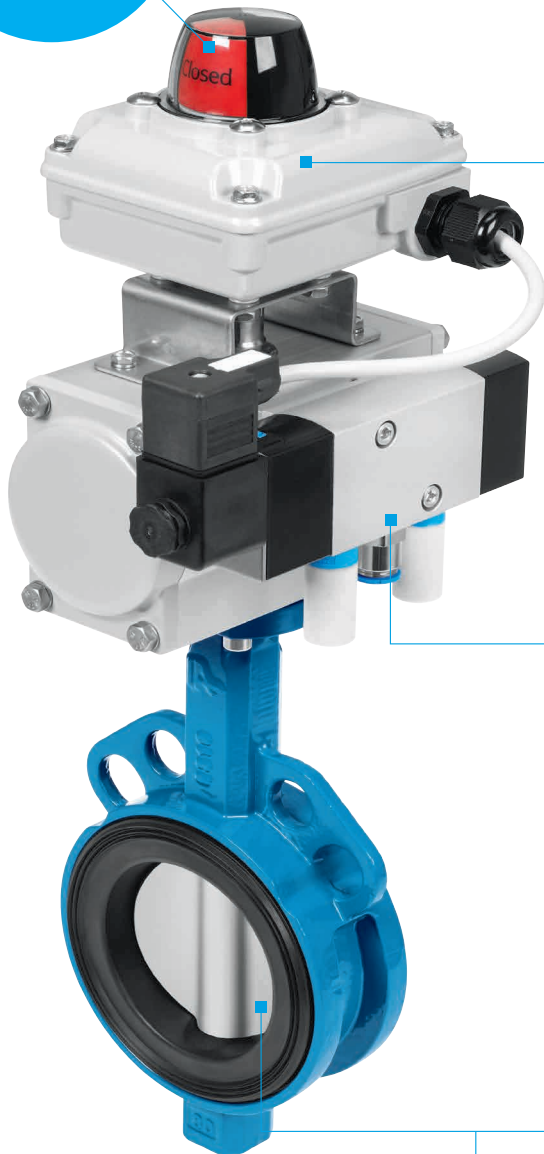
Hygienic: VZBD



- Body and ball stainless steel 316L
- Reduced dead zone (filled cavity)
- Electropolished surface
- Long welding tips or tri-clamp



High visibility indication makes identifying the valve position easy from a distance!



Sensor box SRBC

- Weather-tight aluminum IP67 housing for outdoor applications
- Mechanical, inductive, or magnetic switch variants
- Two cable inputs for common power supply to the sensor box and solenoid valve



➔ More details on page 14

VSNC NAMUR valve

- NAMUR mounting
- Various coil voltage options
- Excellent cost/performance ratio



Single solenoid 3/2 or 5/2



Double solenoid 5/2 or 5/3

➔ More details on page 14

High performance: Butterfly valve VZAF

Ideal for liquids, corrosive or very aggressive gases, butterfly valve VZAF features a design and high-quality materials ensuring the purity and safety of process.

Configurator options for KVZA:

- DN50-DN300
- Wafer, lug, PN10/16, Class 150...
- Body material: coated cast iron epoxy RAL5021
- Disc material: stainless steel 1.4408
- Disc finishing: sans, PFA coated
- Liner: PTFE + Silicone backliner



- Other options on request ex: pharma type V10-V10-T1: Butterfly 316L Ra<0.4 µm + PTFE FDA + certificate 3.1

➔ www.festo.com/kvza
➔ www.festo.com/vzaf

Versatile: Butterfly valve VZAV

Ideal for liquids, neutral and moderately aggressive gases, butterfly valve VZAV features a wide variety of materials compatible with most applications.

Configurator options for KVZA:

- DN25-DN450
- Wafer, lug, PN6/10/16, Class 150...
- Body material: epoxy coated cast iron RAL5021
- Disc material: stainless steel 1.4408, cast iron, steel
- Disc finishing: free, coated PE/PU/PA/ HALAR/ chrome, polished
- Liner: EPDM, NBR, FPM, silicone, abrasive fluids...
- Certification: ATEX, food 1935/2004, FDA, ACS...
- Other options on request

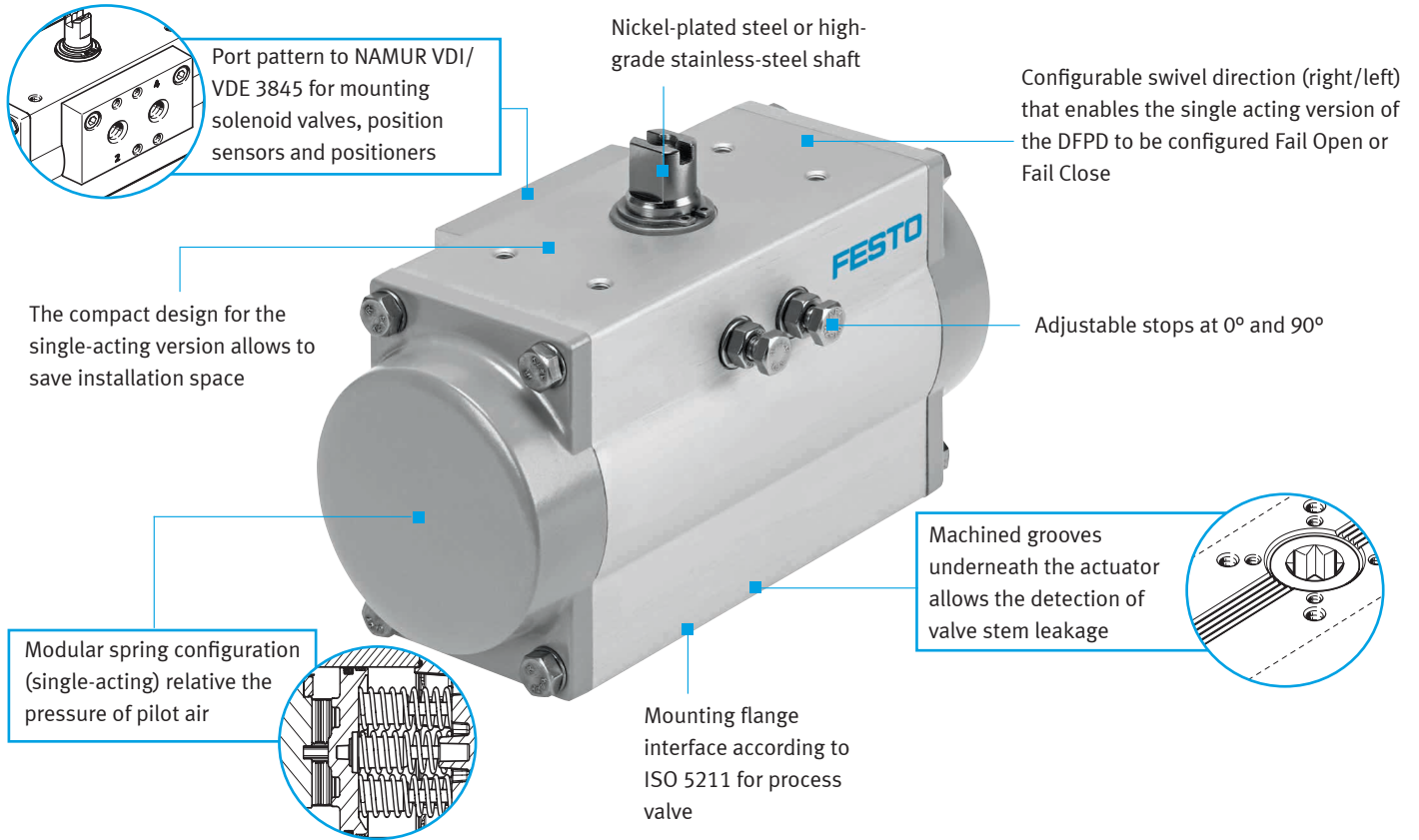


➔ www.festo.com/kvza
➔ www.festo.com/vzav



Quarter-turn actuator - DFPD

The DFPD is the new benchmark in single and double acting quarter-turn actuators. Its rack and pinion drive system exerts constant torque makes it an ideal actuator for butterfly valves, ball valves and dampers. Torques available at 6 bar: 10... 2,300 Nm.



Variants

- Corrosion resistant version with epoxy coating and high grade stainlesssteel shaft for the Chemical Industry
- Low and high temperature versions for extreme conditions
 - Option T6 -50°C
 - Option T4 +150°C
- Rotation angle 120°/135°/180° (double-acting variants)



Other solutions

- Quarter-turn actuator DFPD-HD**
 - For high torque applications (up to 32,000 Nm)
- Quarter-turn actuator DAPS-CR**
 - All stainless-steel design for corrosive environments
- Quarter-turn actuator DAPS-MW**
 - Possible control by manual handwheel in case of failure

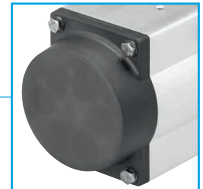


Quarter-turn actuator - DFPD-C: Chemical variant

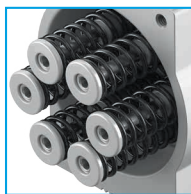
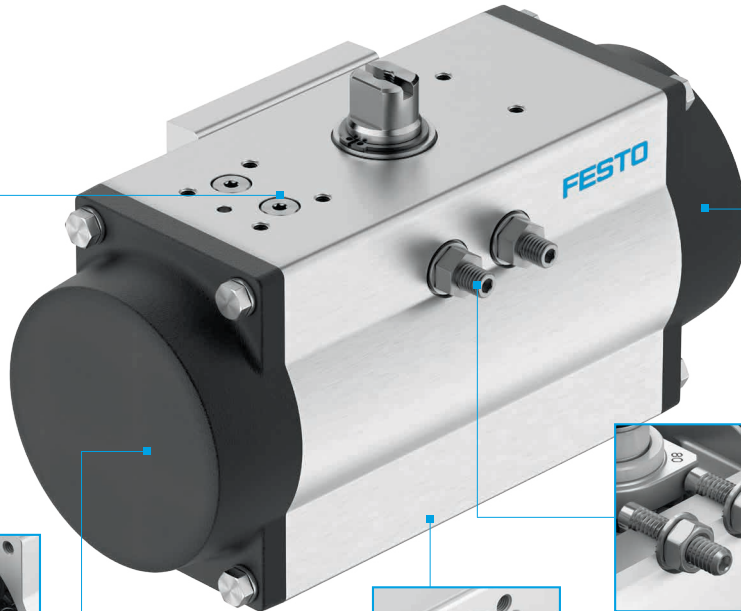
The DFPD-C perfectly meets the requirements of the chemical and petrochemical industries in terms of material safety and resistance. Its pneumatic interface VDI/VDE 3847 (optional) allows the integration of a positioner and a NAMUR pilot valve without external piping to avoid any risk of leakage and assembly error. Torques available at 6 bar: 10... 2,300 Nm.



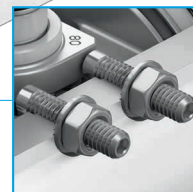
Option (...-C-VDE2) :
VDI/VDE 3847 interface
(DFPD-C \geq 80 Nm) Integration
of a NAMUR valve + positioner
on a single DADG base



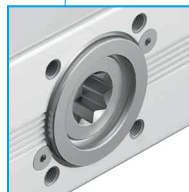
Hard-anodised scratch
resistant end cap



Non-ferrous spring
cartridges



Blow-out proof end position
screw

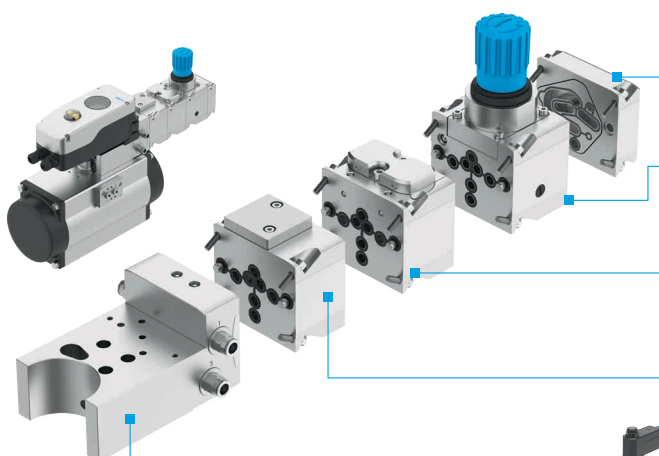


Centering ring - reduces
offset when installed on
mounting bracket

www.festo.com/dfpd

Ready for VTOP

With its VDI/VDE 3847 pneumatic interface, the DFPD-C is ready to integrate our latest innovation in pneumatic modules. The VTOP with patented and integrated air circuit allows you to combine the individual modules you need and easily adapt additional modules at any time. It is ideal for control applications with positioner and additional instrumentation. It facilitates installation without tedious search for components and simplifies maintenance.



Pneumatic interface VABA
Direct mounting of positioner and extension
modules to actuator without external piping

End plate VABE

The orientation defines the safety position
of the actuator (double-acting)

Filter regulator PCRI

Ensures good quality compressed air and
allows you to control the pressure

Booster VOGM

Increases flow rate up to 2000 l/min
(adjustable) for faster actuation

Safety position:

-VABP (single acting)

Connection of 1 or 2 NAMUR valve
for SIL requirement (1oo1 or 1oo2
architecture)

-VOGI (double effect)

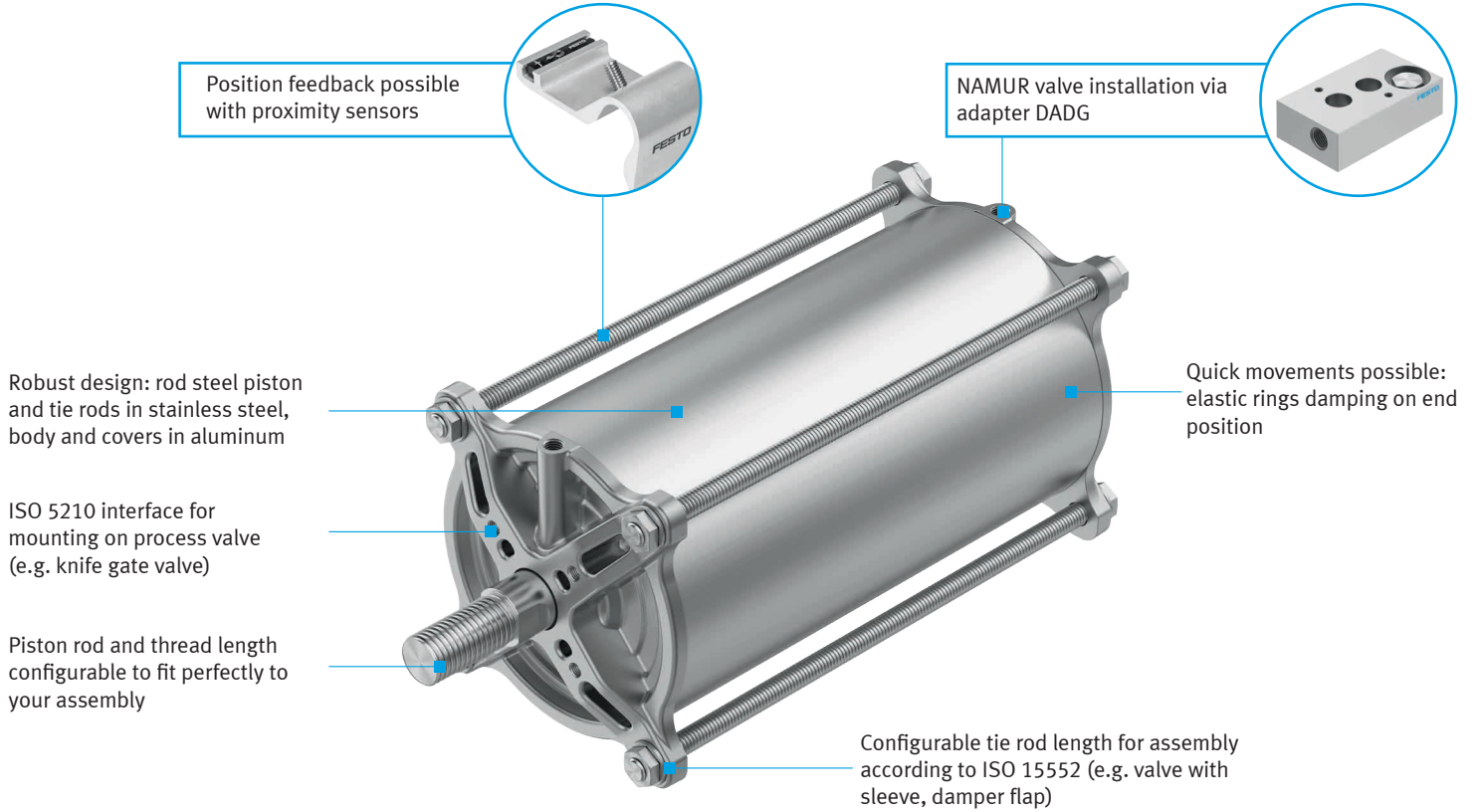
Automatic switchover for backup air
capability



High temperature version available for
tunnel damper @250 DegC for 2 hours

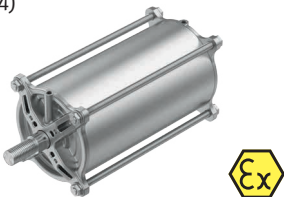
Linear actuator - DFPC

Versatile and economical, the DFPC offers both ISO 5210 and ISO 15552 interface as well as numerous accessories and options. It can thus mount on all machines or process valves. Diameter 80... 320 mm. Stroke 10... 1600 mm.

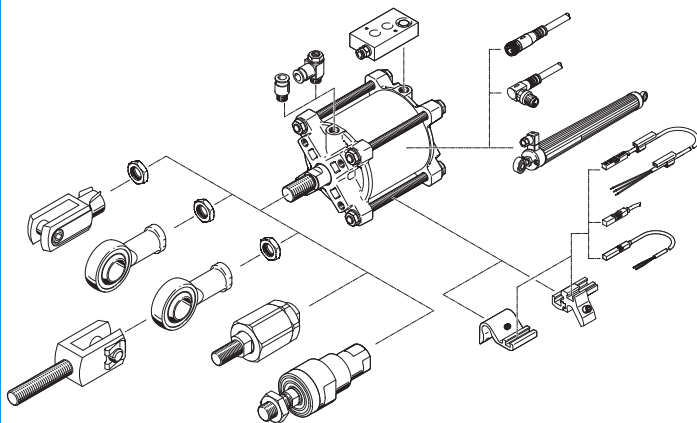


Variant

ATEX (option EX-4)

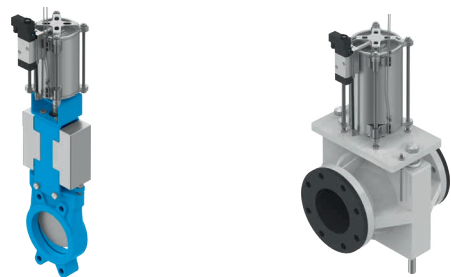


Various attachment accessories available



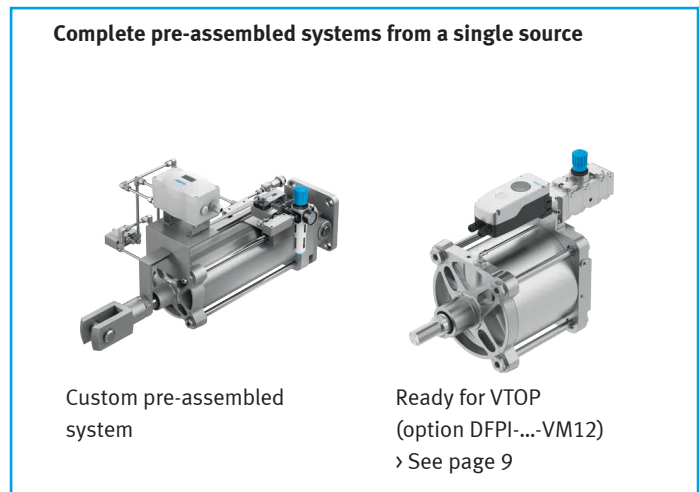
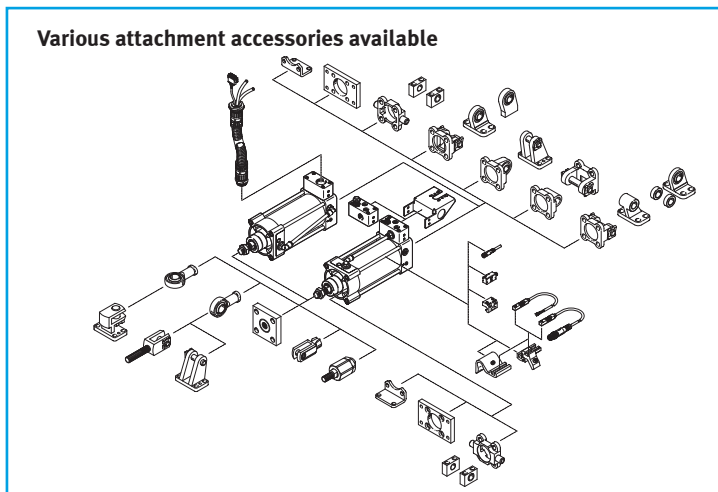
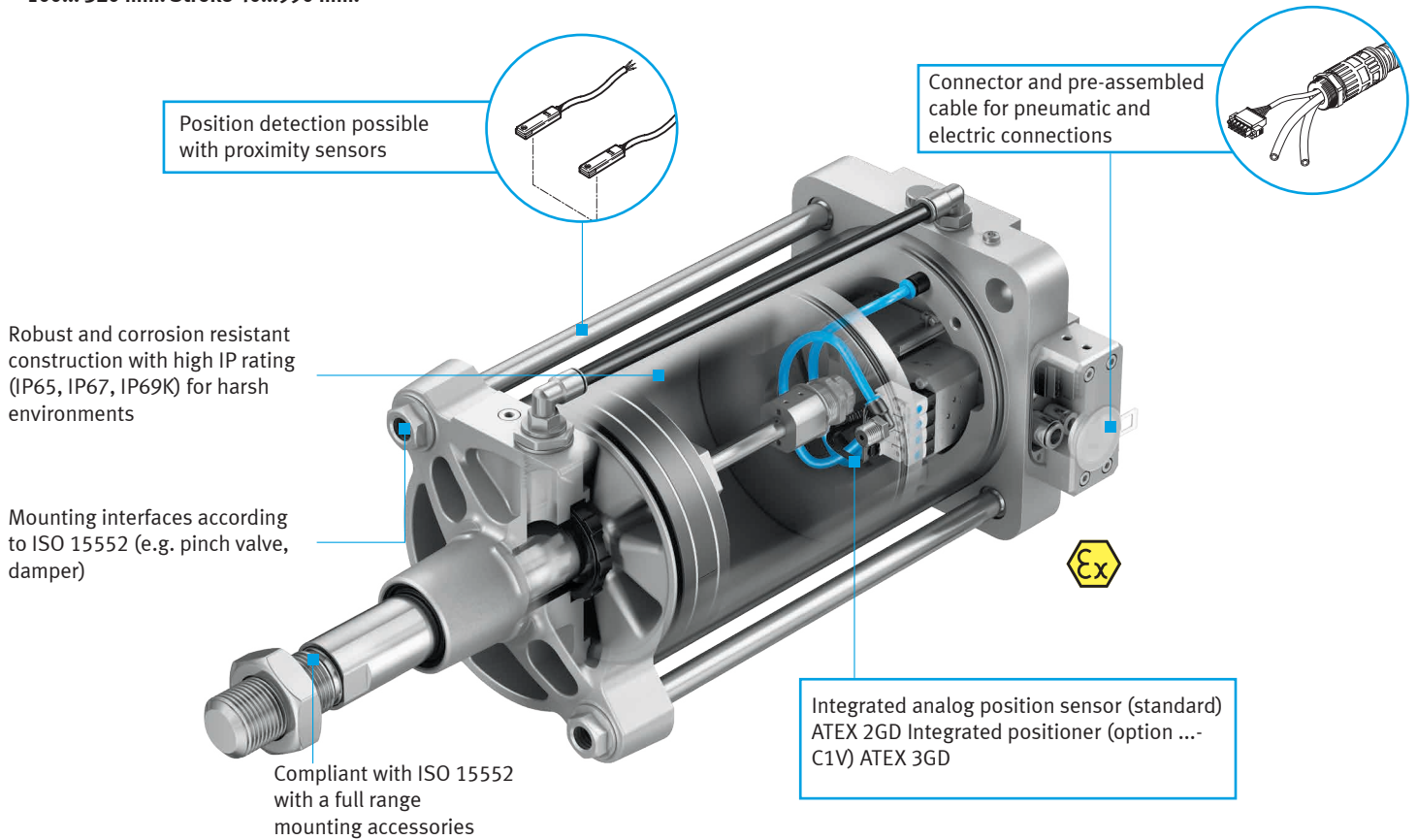
Completely pre-assembled systems from a single source

The DFPC can be offered directly (on request) pre-assembled on pinch or knife gate valves.



Regulated linear actuator - DFPI

Equipped with a guided rod, an analog position sensor and a positioner (optional) directly integrated into the actuator, the DFPI is ideal for controlling shutter dampers, filling bulk materials, actuating pinch process valves or knife gate valve in neutral or difficult environments. Diameter 100... 320 mm. Stroke 40...990 mm.



Control of valves in a water treatment plant



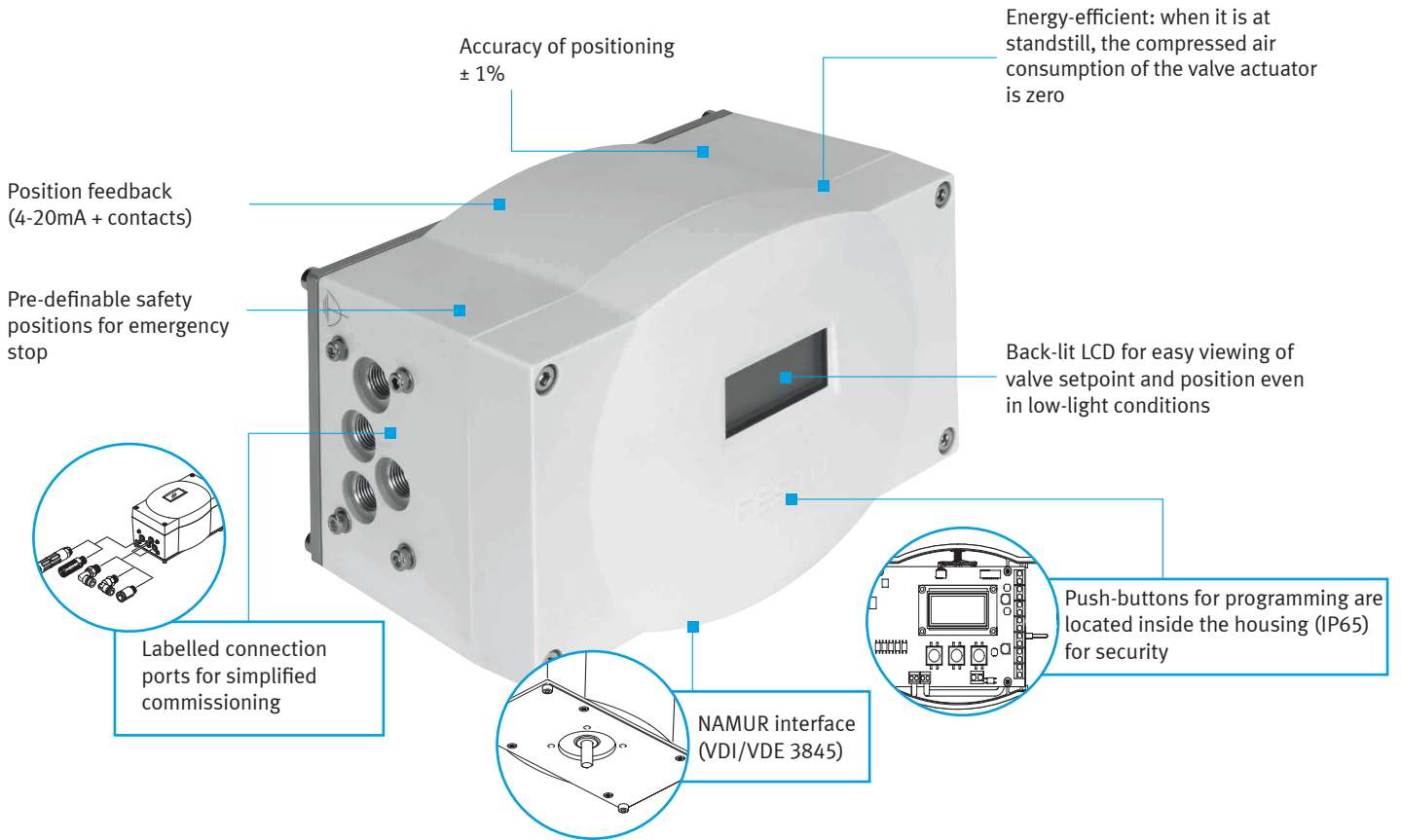
Level regulation in the mineral processing



Silo emptying control in the manufacture of fertilisers

Positioner - CMSX

The CMSX positioner is optimised for single or double acting linear and quarter-turn actuators. Its excellent cost/performance ratio makes it the perfect positioner for non-explosive environments.

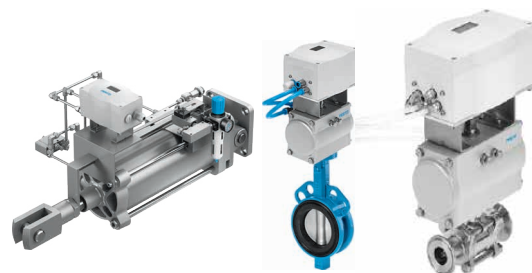


Variants

- Control of single or double acting linear and quarter-turn actuators
- Setpoint signal configurable 4-20 mA, 0-20mA and 0-10V (separate 24VDC supply)
- Flow rate 50L/min or 130L/min depending on actuator size
- Pre-definable failure position (opening/closing or maintaining the position)
- With integrated rotary potentiometer for controlling quarter-turn actuators or terminal block for external potentiometer (0-5V, $\geq 5 \text{ k}\Omega$) for controlling linear actuators

Fully regulated systems from a single supplier

Combined with a DFPI linear actuator or a DFPD quarter-turn actuator, the CMSX can be offered directly pre-assembled for the control of flap dampers or butterfly and ball valves.



Designed for controlling process valves such as a butterfly valve across a wide range of industry sectors



Valve positioning solutions for flow control



High flow version (130L/min) for large actuators

Intelligent positioner CMSH with HART communication

The CMSH positioner is optimised for single or double-acting linear and quarter-turn actuators. Its ergonomics, diagnostic capabilities and great installation flexibility make it the perfect choice for many applications.

Big screen with orientable reading direction and simple 4-button navigation

Advanced diagnostics
 Continuous pressure monitoring
 Leak detection
 Partial Stroke Tests
 Official symbols according to NE 107

Visual position indicator for quarter-turn actuators

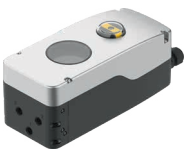
Precise regulation up to 400 l/min (2,000 l/min with volume booster VTOP)
 > More details on page 9

2-wire technology, 4...20mA, HART 7

Robust design
 IP67 metal body
 -40...+80 °C

For increased reliability:
 position feedback 4-20 mA + optional limit switches

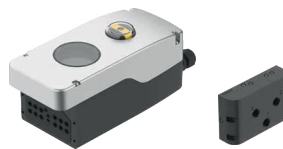
Variants



For single-acting actuators



For double-acting actuators



Universal design for flexible assembly of different bases

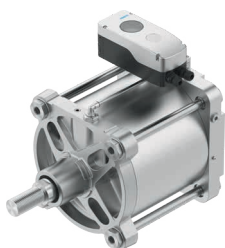


ATEX and SIL 2 version (redundant SIL 3)
SIL certified according IEC 61508

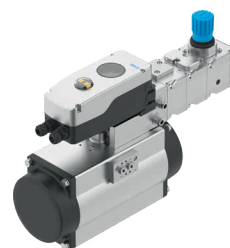
Examples of integration



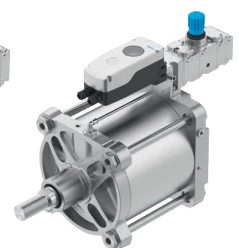
Mounting adapter according to VDI/VDE 3845-1 with external piping



Mounting according to VDI/VDE 3847 with DADG base without external piping



Ready for VTOP
 > See page 9



Limit switch boxes for quarter-turn actuators (VDI/VDE 3845 interface)

The sensor boxes are used to feedback information and visualise the position of process valves actuated by a quarter-turn actuator. Whatever your choice, their design allows simple and quick integration and reduces your installation time.

Sensor box SRBC

Versatile design
and economic



- Weatherproof body for outdoor applications
- Mechanical, inductive or magnetic switch variants
- Modular visual position indicator (open/closed, three-way T or L channels, etc.)
- Standard and modular mounting bracket
- M12 or terminal port connection
- IP66, IP67 depending on model
- ATEX 1GD option EX6
- SIL2
- -40... +80°C (depending on model)

Sensor box SRBE

Ideal for explosive
atmospheres



- Flameproof enclosure enables installation without safety barriers
- Mechanical, inductive or magnetic switch variants
- Terminal port connection
- IP67
- ATEX 2GD, IECEx depending on model
- SIL2
- -20... +60°C

Sensor box SRBG/SRBI

Compact design



- Direct mounting with minimal space required
- Double inductive sensor
- M12 or terminal port connection
- IP67
- ATEX 1GD (depending on model)
- SIL2 (depending on model)
- -25... +70°C

Limit switch DAPZ...AR

Polymer version



- Polymer casing
- Modular mounting system
- Mechanical, inductive or magnetic switch variants
- Terminal port connection
- IP67
- -20... +70°C

NAMUR pilot valves

Designed for the control of pneumatically actuated process valves, NAMUR valves can be mounted directly on the linear or quarter-turn actuators with ease.

Namur pilot valve VSNC-F8

Versatile
and economic



- Changeover seal for single coil 3/2 or 5/2-way, double coil 5/2, double coil 5/3 function
- G1/4, NPT1/4" connection
- Coils 12/24/48 VDC, 24/48/120/230 VAC
- -20... +60°C
- Air-recycling feature for 3/2 configuration to eliminate internal actuator corrosion

Namur pilot valve VSNC-FN/-F19/-F19A

ATEX approved
for hazardous
areas



- ATEX Zone 1/21 : Ex ia, Ex me, Ex m
- ATEX Zone 2/22 : Ex na
- Coils 12/24/48 VDC, 24/48/120/230 VAC
- Poppet design resistant against contaminated pilot air (option-FT)
- Protective air exhaust
- G1/4, NPT1/4" connection
- -20... +60°C

Namur pilot valve VSNC-P2

CNOMO interface
according to ISO
15218



- ISO interface 15218
- Pneumatic piloting possible with CNOMO adaptor VABD
- Coils 24 VDC, 110/230 VAC
- ATEX Zone 1/21 : Ex ia, Ex d
- Poppet design for contaminated pilot air (option-FT)
- G1/4, NPT1/4" connection
- -20... +60°C

Pilot valve VOFC/VOFD

Extremely robust
and resistant to
corrosion



- Ematal aluminum/ stainless steel body
- 3/2-way single, 5/2-way single
- and double solenoid
- NAMUR connection or in line G or NPT 1/4" and 1/2"
- Coils 12/24/48/60/120/230 VDC, 24/110/230 VAC
- -25... +60°C (-50°C option T6)
- Atex, IECEx...
- SIL 3

Solenoid valves

The 2/2-way solenoid media valves are suitable for neutral gases and liquid media for both factory and process automation.

At Festo, you can find the right valve for your fluid control requirements thanks to our range of solenoid valve options.

Forced pilot – VZWF

Ideal for applications in closed media circuits



- Kv 1,8... 28 m³/h
- Maximum fluid pressure 10 bar according to model
- Zero differential pressure required
- Actuation without media possible
- Brass or stainless-steel material
- G or NPT thread 1/4" to 2"
- 2/2 NC function (others on request)
- ATEX on request

Direct acting – VZWD

High pressures with low flow rates



- Maximum fluid pressure 90 bar according to model
- Operates without differential pressure even in closed media circuits
- Actuation without media possible
- Brass or stainless-steel material
- G or NPT thread 1/8" to 1/4"
- 2/2 NC function (others on request)
- ATEX on request

Assisted control diaphragm - VZWM piston - VZWP

High throughput, open circuit



- Kv 1,6... 39 m³/h (VZWM), 1,5...11,5m³/h (VZWP)
- Maximum fluid pressure 40 bar (VZWP), 10 bar (VZWM) depending on model
- Minimum differential pressure of 0.5 bar (open circuit)
- Brass or stainless-steel material (VZWM)
- G or NPT thread 1/4" to 2"
- 2/2 NC function (others on request)
- ATEX on request

Sensors

Our complete catalog of sensors gives you the guarantee of perfectly controlled automated systems.

Pressure sensor - SPTW

Ideal for pressure and vacuum sensing



- Pressure and vacuum sensing for gaseous and liquid media
- High media resistance
- Pneumatic connection G1/4 female thread
- Electrical connection via M12, 4-Pin
- Accuracy $\pm 1\%$ FS
- Repeatability $\pm 0.1\%$ FS

Pressure transmitter - SPAW

Perfect for measuring media pressures



- Pressure and vacuum sensing for gaseous and liquid media
- 4-digit LED display, with display options - Bar, MPA, kPA, Psi, Kg/cm²
- Electrical connection 4-pin Plug M12x1 or 5 pin Plug M12x1
- Accuracy $\pm 1\%$ FS
- Repeatability $\pm 0.1\%$ FS

Flow sensor - SFAW

The easy way to monitor fluids



- Measures flow rate, consumption and temperature of neutral liquid media
- Max. measuring range.100L/min
- Highly visible display
- The display and the housing can be freely rotated IO-Link support
- Easy to replace the sensor and fittings
- Many connection types (threaded, splined, tri-clamp)

Cylinder sensor - CRSMT

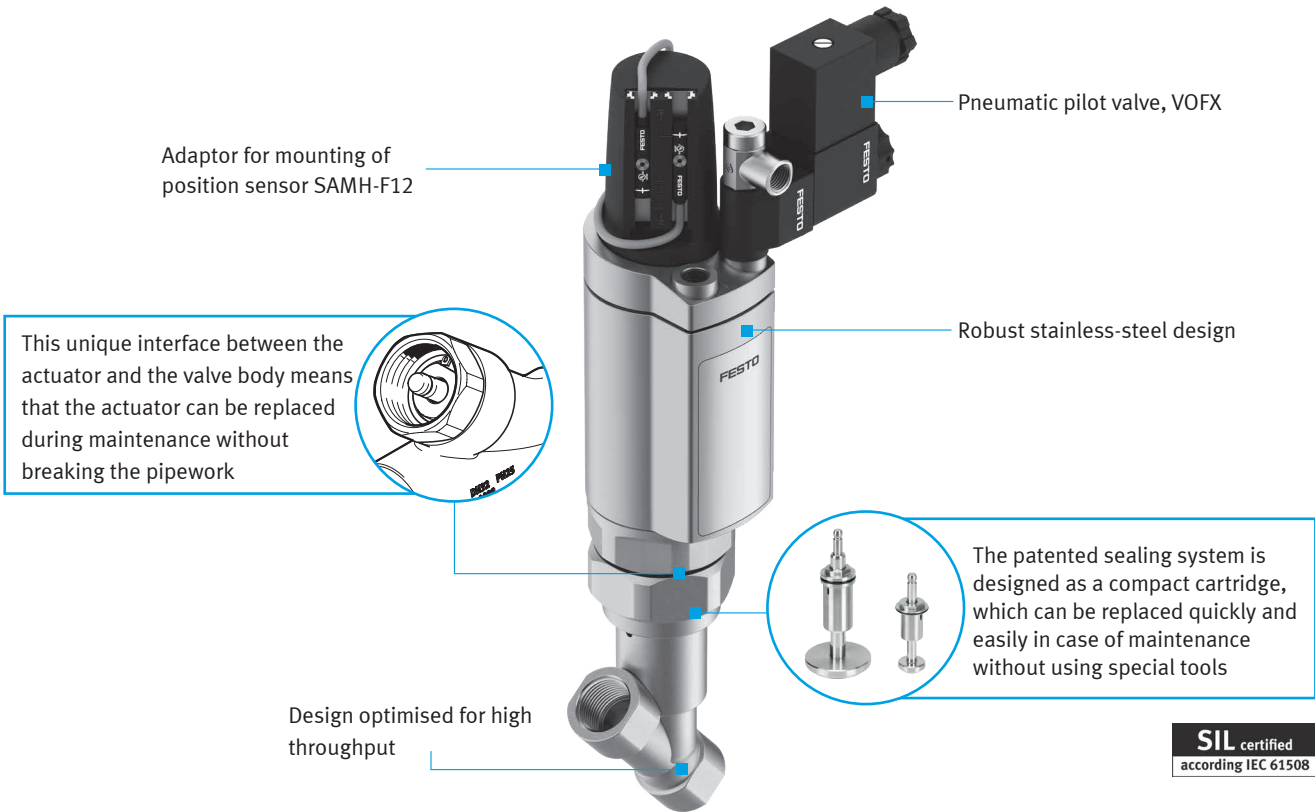
Cylinder sensors for outdoor use



- Suitable for outdoor use and washdown applications
- Resistant to oils, acids and alkalis
- Recommended for use with Festo linear actuators DFPI, DFPC or valves of VZQA and VZXA processes

Angle seat valve – VZXA

With its robust design and high flow rate, the VZXA is ideal for applications such as heating, cooling, transporting steam, chemical cleaning, autoclaves etc.



Variants

- Stainless steel or polymer actuators single acting NC/NO or double acting



Piston 46 mm DFPK



Piston 75 mm DFPK



Membrane 90 mm DFPK

- Materials and connections



Stainless-steel clamp

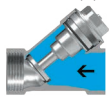


Threaded stainless steel/brass



Weld end stainless steel

- FFluid above (A) or below (B) the seat



VZXA-A (gas)



VZXA-B (liquids + gas)

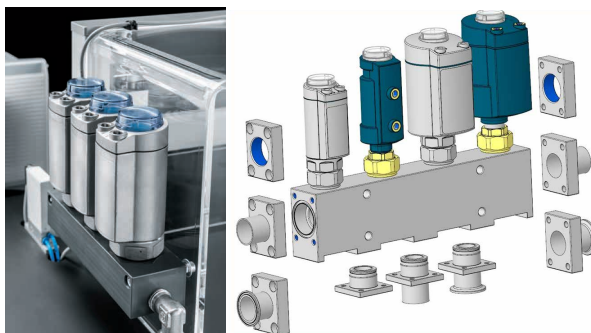
- Option -TP: temperature +200°C, modified PTFE. Higher temperatures on request
- Option EX4 : ATEX 2GD



Manifold block on request

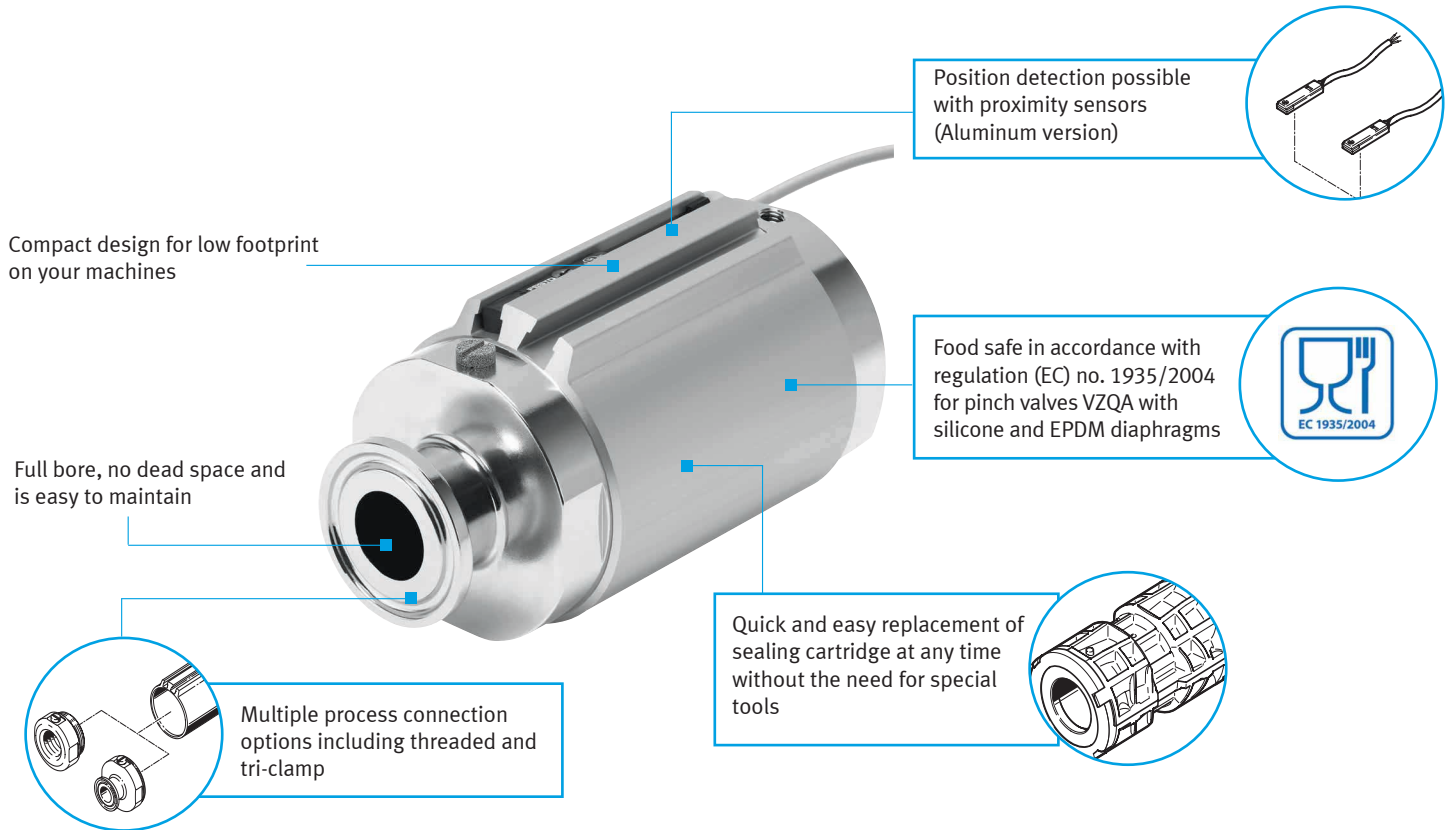
Compact and reducing the risk of leaks, pre-assembled manifold blocks save you time in design, installation and maintenance.

- Standard block with 4 valves (2 to 7 possible)
- Body material: aluminum, stainless steel 1.4404, brass
- Various connections (1/4" - 2"), threaded, clamp, weld
- 46- and 75-mm actuators with VZXA piston cartridge
- Other designs on request



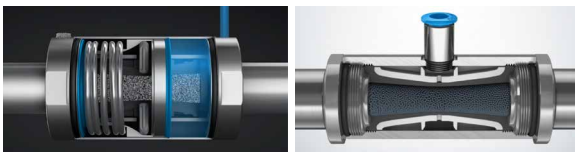
Pinch valve – VZQA


The VZQA pneumatic pinch valve is a versatile solution for a wide range of media such as gases, granulates, liquids, syrups and media with entrained solids, regardless of whether they are abrasive, corrosive or highly viscous.



Variants

- NC and NO versions

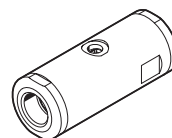


- DN6, DN15, DN25
- Maximum fluid pressure 2, 4 and 6 bar depending on model
- Flow control possible with proportional pressure controller
- For explosive area (NO-EXA version) 

Materials

Housing materials

- Aluminum
- Stainless-steel



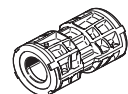
End cap material

- Aluminum
- Stainless steel
- POM (Acetal)



Shut - off element

- EPDM
- NBR
- Silicone



Filling of bottles



Baby food dosage



Pinch system for tube cutting

Air preparation, tubing and fittings

A pneumatic system is not complete unless you have considered the right air preparation and accessories such as fittings and tubing. These components are part of the core range from Festo and are readily available in a range of different variants.

MS Series

Modular product series



- Simple or complex applications
- Individual or pre-assembled units
- Integrated functions such as safety, energy efficiency
- Sturdy housing
- Easily expandable
- Size ranges from 1/8" up to 2"

LFR...-EX4 zone ATEX 1 & 21

For ATEX environments



- Pressure regulator filter function
- G or NPT 1/4" and 1/2" thread
- 1150... 3400 L/min
- ATEX 2GD
- -40... +80°C
- Filtration 5 and 40 µm

All stainless-steel PCRP

For harsh environments



- Pressure regulator filter function
- Stainless-steel materials 316L
- G or NPT 1/4" and 1/2" thread
- Up to 4100 L/min
- ATEX zone 1/21
- -60... +80°C depending on model
- Filtration 5 and 40 µm

Tubing fittings

Specific to your applications



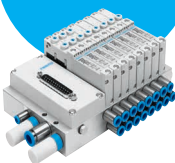
- Mini, standard, metal, polymer or corrosion resistant fittings
- Push in, threaded, barbed, couplings
- Flow controls, shutoff and non-return valve fittings
- Pressure resistant, heat resistant, antistatic, resistant to cleaning agents, media resistant, flame retardant, welding splatter resistant, food industry approved

Valve terminals

Festo offers the largest and most flexible range of Valve Terminals. Valve Terminals are completely pre-assembled modules consisting of pneumatic valves, electrical connection technology and communication network capabilities.

Valve terminal -VTUG

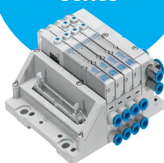
Compact and cost-effective



- Multi-pin, fieldbus, IO-Link
- Up to 24 valve positions (piloting of 48 single-acting valves)
- Degree of protection IP40, IP65, IP67
- Multiple different pressure zones on one valve terminal
- Control cabinet optimized version available

Valve terminal - MPA

High performing and expandable series



- High performance valves in sturdy metal housing
- With multi-pin plug, AS-interface, CPI, fieldbus connection and control block
- Up to 128 2/2-way or 3/2-way valves thanks to two valve functions in each valve slide

Valve terminal - CPX

Modular with remote I/O for NAMUR signals



- Extremely modular with up to 9 modules per terminal
- Compatible with PROFIBUS DP, PROFINET, Modbus TCP, DeviceNet and Ethernet/IP
- Integration of valve terminal and remote I/O on a single platform saves installation space

Valve terminal - CPV10-Ex

Ideal for explosive areas



- Intrinsically safe design for use in potentially explosive atmospheres
- Ideal for very high flow rates in small spaces
- Up to 16 x 3/2 way valves per valve terminal
- Extremely robust thanks to the metal valve design
- Optimised for control cabinets

Control cabinets

Control cabinets from Festo are individually designed and adapted to requirements in process automation. Cabinets provide protection for all pneumatic and electrical system components across all industry segments.

Save time and costs with ready-to-install cabinets

Just one order number for the entire control cabinet

Integration of pneumatic and electrical system completely designed and assembled

Technology mix from one single source

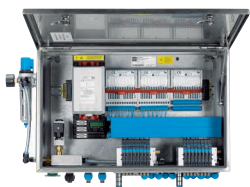
Stainless steel cabinets also available for use in corrosive environments

Provides protection against harsh elements

Labelling of the connections in the control cabinet and in the documentation

Quick and easy maintenance thanks to clearly arranged, neat and compact tubing

Variants on request



ATEX Zone
Valve terminal with intrinsic barrier for Zone 1 and 21 (e.g., oil & gas)



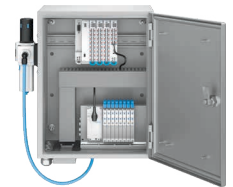
Robust
Protection against dust and liquids (e.g., mining industry)



Modular
Different sizes of valve, different pressure areas within from the same terminal (e.g., water treatment)



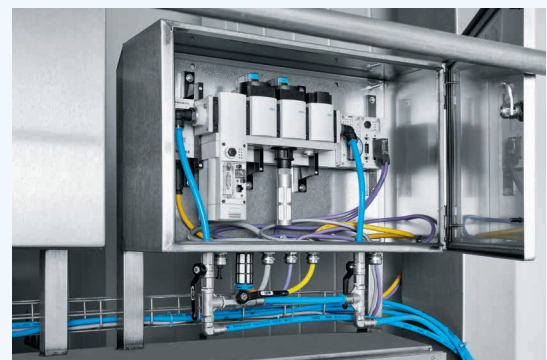
Protected air treatment
The MS Box provides air treatment a mechanical protection and resistance to washing (e.g., production area agro-food)



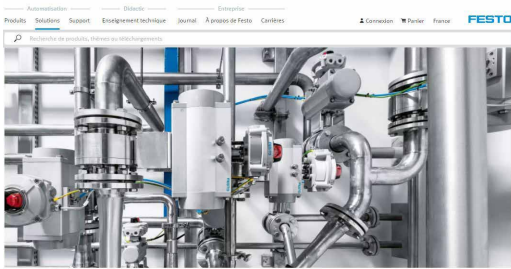
Economical and compact
Integrated CPX-E+VTUG architecture in enclosure perfectly meeting the needs of process industries

Control cabinets made to measure

- Individually configured
- Adapted to specific requirements in process automation
- Design and sizing included
- Fully tested system
- You receive detailed system documentation:
 - Assembly drawings
 - Parts list
 - Circuit diagrams
 - Operating instructions for components
 - CE Certification



The engineering tools to give you more speed and greater reliability



L'automatisation dans l'industrie des process

Des conditions environnementales extrêmes et des exigences de sécurité strictes : l'industrie des process doit relever des défis très particuliers. Dans le même temps, la pression sur les coûts augmente, les réglementations deviennent plus strictes et les exigences sont de plus en plus particulières. Comment allez-vous réussir, à l'avenir, à accroître la fiabilité des process et la standardisation de vos systèmes, tout en optimisant l'efficacité, la flexibilité et les délais de mise sur le marché ? Profitez du savoir-faire de Festo en matière d'automatisation et de son expertise industrielle.

A website designed for you

Ergonomic and efficient, this new site will help you access more products and tools easily and faster than never. ➔ www.festo.com



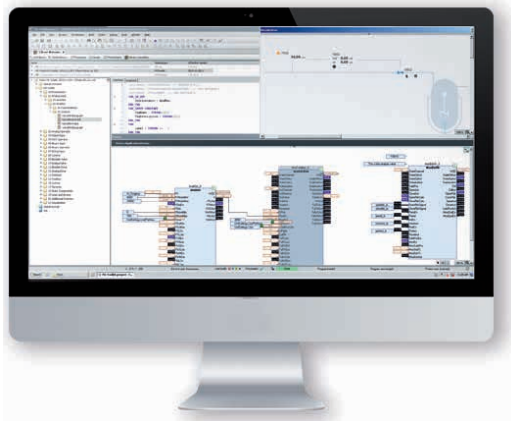
Quick Search Plus

Get every product information quickly and effectively

- Find the right products easily with built in type code search
- Direct connection to selection and dimensioning tools
- Select multiple products for comparison of data
- Add products to basket or create your own parts list to export

- Easy access to technical documentation and spare parts catalogue

➔ www.festo.com/quicksearch



Modular programming of your applications process

The PA-Toolkit and its library for CODESYS (IEC 61131-3) allows you to program your applications process intuitively. Each module has its own controller agreement with the MTP standard (Module Type Package).

➔ www.festo.com/pa-toolkit



Online configurators of process valves

Whether manually operated or fully automated valves, our new configurators allow you to choose the optimal solution for your applications. Enter your settings in a few clicks and the configurator presents you with the appropriate combination. Your engineering process is faster, more easier and more reliable.

- ➔ www.festo.com/kvza
- ➔ www.festo.com/kvzb
- ➔ www.festo.com/kdfp



Sustainable machine optimisation

Carrying out an optimisation check is always advisable when machines and systems need to remain in use, but individual components are no longer up to date, or overall system efficiency is no longer satisfactory. Now, it is a matter of fully exploiting the service life, reducing downtimes, maintaining the quality of results, and reducing energy consumption.

Our qualified personnel go through the problems and the potential on-site improvements with you. The analysis covers both pneumatic and electric components and systems, regardless of the manufacturer. You will then receive specific recommendations for measures to take that are economically viable too. We only suggest replacing components and systems that will really make a difference.

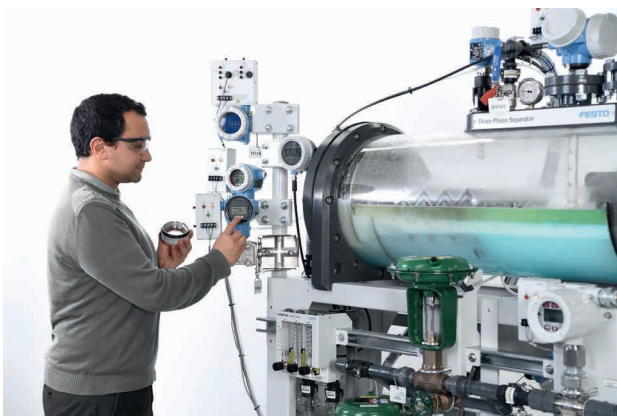
➔ www.festo.com/support



Efficient saving services

High energy prices, rising cost pressure and a growing awareness of climate protection undoubtedly make industrial energy efficiency a key business challenge for everyone. The Festo Energy Saving Services to DIN EN ISO 11011 offer you a customised range of services for identifying and optimally exploiting potential compressed air savings, both systematically and sustainably.

➔ www.festo.com/ess



Festo Didactic : Leadership in Technical Education

As a global partner for educational institutions, governments, state organisations and companies around the world, we design and implement training centers and laboratories, educational equipment and programs that train people to perform in highly dynamic and complex environments. Our products and services are developed by a

network of experts in the fields of industrial production, automation research and development, and didactics.

We also offer certified and professional training sessions for your technical teams. Finally, Festo LX is an online platform with content techniques allowing your teams to train on different technological topics independently.

➔ www.festo.com/didactic

➔ www.festo-tac

➔ www.festo.com/lx

Process Automation Solutions - Full Range

Automation components

Supervision level



HMI CDPK with library PA-toolkit

Control level

Controllers



Integrated controller CPX-CEC



Integrated controller CPX-E-CEC



Compact controller CECC

Remote I/O



Modular electrical terminal CPX



Modular electrical terminal CPX-E

Valves terminals



Valve terminal CPV Ex-i for use in Ex zones



Valve terminal MPA/MPA-F



Valve terminal MPA-C (Clean Design)



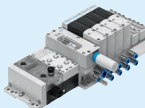
Valve terminal VTUG



Valve terminal VTUG optimised for control cabinet installation



Valve terminal VTSA/VTSA-F



Festo Motion Terminal VTEM

Field level

Solenoid valves



Pilot valve VSNC (NAMUR)



Pilot valve VSNC-ATEX (NAMUR)



Pilot valve VOFC (NAMUR)



Pilot valve VOFD (NAMUR + thread)



Pilot valve VUVS



Proportional pressure regulator VPPX

Sensors and positioners



Sensor box SRBC



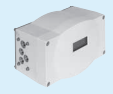
Sensor box SRBE (flameproof enclosure)



Sensor box SRBG (inductive double sensor)



Limit switch box DAPZ-AR polymer



Positioner for quarter turn and linear actuators CMSX



Positioner for quarter turn and linear actuators CMSH



Proximity sensor SME/SMT



Pressure sensor SPAW for gases/liquids



Pressure transmitter SPTW for gases/liquids



Flow sensors SFAB/SFAW for gases/liquids

Actuators



Quarter turn actuator DFPD



Quarter turn actuator for chemical industries DFPC-C



Quarter turn actuator DAPS



Quarter turn actuator, stainless steel DAPS-CR



Quarter turn actuator with handwheel DAPS-MW



Quarter Actuator for high torque DFPC-HD



Linear actuator DFPC



Modulating linear actuator DFPI-NB3

Process and media valves



Modular angle seat valve VZXA



Pinch valve VZQA (NO/NC)



Directly actuated valve VZWD



Piloted valve VZWM/VZWP



Force pilot operated valve VZWF



Pneumatic valve VLX



Ball valve VZBA/VZBM



Ball valve VZBC/VZBD



Butterfly valve VZAF/VZAV

Air Preparation



Service units



Stainless steel filter regulator PCPR



Air dryers



Couplings



Push-in fittings



Plastic tubing PUN-H



Polytetrafluoroethylene tubing PTFEN



Pressure booster DPA



Compressed air reservoirs

Configurable solutions



Festo Designer Studio engineering design software for visualisation



Butterfly valve with pneumatic actuator regulated by positioner KVZA



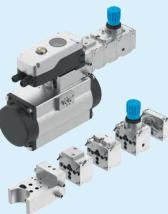
PLC development environment



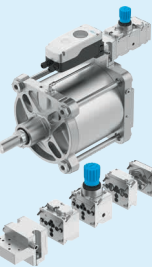
Ball valve with pneumatic actuator and accessories KVZB



Pneumatic actuator and accessories KDPP for quarter-turn valves



Pneumatic modules VTOP for DFDP-C



Pneumatic modules VTOP for DFPI...VM12

Customised systems



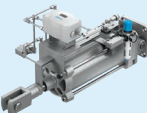
Control cabinet



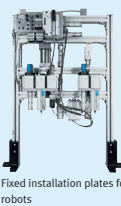
Pneumatic panel



Valve manifold block VZXA



Linear actuator DFPI with positioner CMSX and air treatment



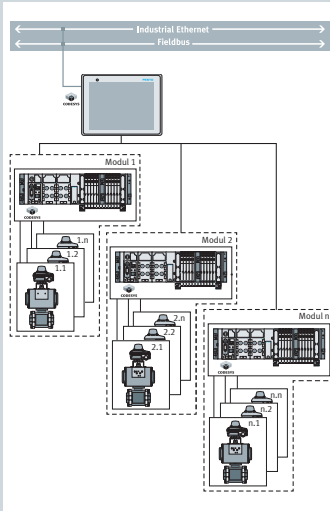
Fixed installation plates for robots



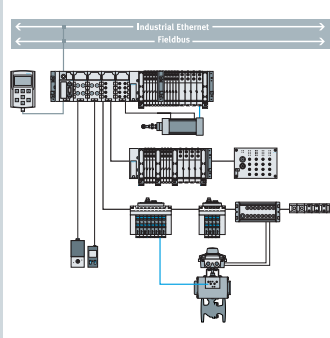
Knife gate and heavy-duty pinch valves

Automation concepts

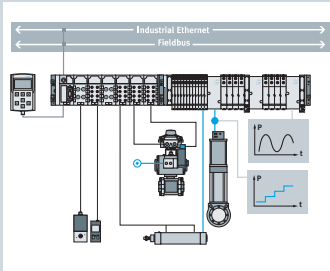
Modular automation



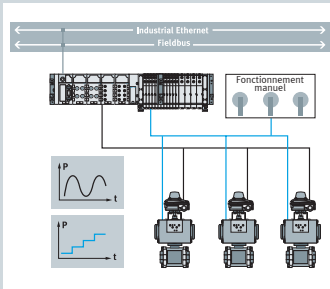
Hybrid installation (centralised/decentralised)



Centralised installation



Automation with pneumatic operator panel



Application solutions



Control of dart valve for level regulation in mineral processing



Bottle filling applications



Abrasion resistant options for powders and solids



Shut-off control for glycol used in food production



High corrosion resistance in extremely dusty and contaminated environments

Festo – your partner in automation

Australia

Head Office

Melbourne

Festo Pty. Ltd
179-187 Browns Road
P.O. Box 261
Noble Park Nth VIC 317A
Tel: 1300 88 96 96

Email: info_au@festo.com

Branch Offices:

Adelaide, Perth, Queensland, Sydney

Indonesia

Head Office

PT. Festo

Jl. Tekno V Blok A/ 1 Sektor XI
Kawasan Industri BSD
Serpong Tangerang 15314
Banten Indonesia
Tel: +62 804 1 2 33786

Email: sales_id@festo.com

Malaysia

Head Office

Festo Sdn Bhd

14A, Jalan Teknologi
Taman Sains Selangor 1
Kota Damansara
47810 Petaling Jaya
Selangor

Tel: +60 3 6144 1122

Email: csc_my@festo.com

Branch Offices:

Johor Bahru, Melaka, Penang

New Zealand

Head Office

Festo Ltd

20 Fisher Crescent
Mount Wellington
Auckland

Tel: +64 (0)9 574 1094

Email: info_nz@festo.com

Branch Offices:

Christchurch

Philippines

Head Office

Festo Inc.

KM 18, West Service Road
South Superhighway
1700 Paranaque City
Metro Manila

Tel: +63 1800 10 12 33786

Email: festo_ph@festo.com

Singapore

Head Office

Festo Pte. Ltd.

6 Kian Teck Way

Singapore 628754

Tel: +65 6285 8585

Email: sales.sg@festo.com

Thailand

Head Office

Festo Ltd.

202 Kanchanapisek Road
Ramintra Khannayao
Bangkok 10230, Thailand

Tel: +66 1 800 019 051

Email: sales_th@festo.com

Vietnam

Head Office

Festo Co., Ltd

Floor 2, HQ Tower, No. 9,
Tran Nao Street, Quarter 3
An Khanh Ward, Thu Duc City,
Ho Chi Minh City, Viet Nam

Tel: +84 28 3514 5600

Email: sales_vn@festo.com

Branch Office:

Hanoi



Connect with Us



Southeast Asia



Oceania

www.festo.com